

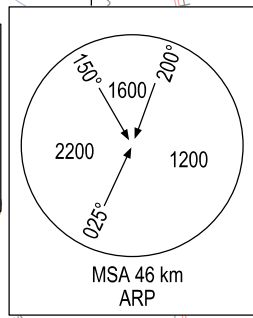
105° 00' E

105° 30' E

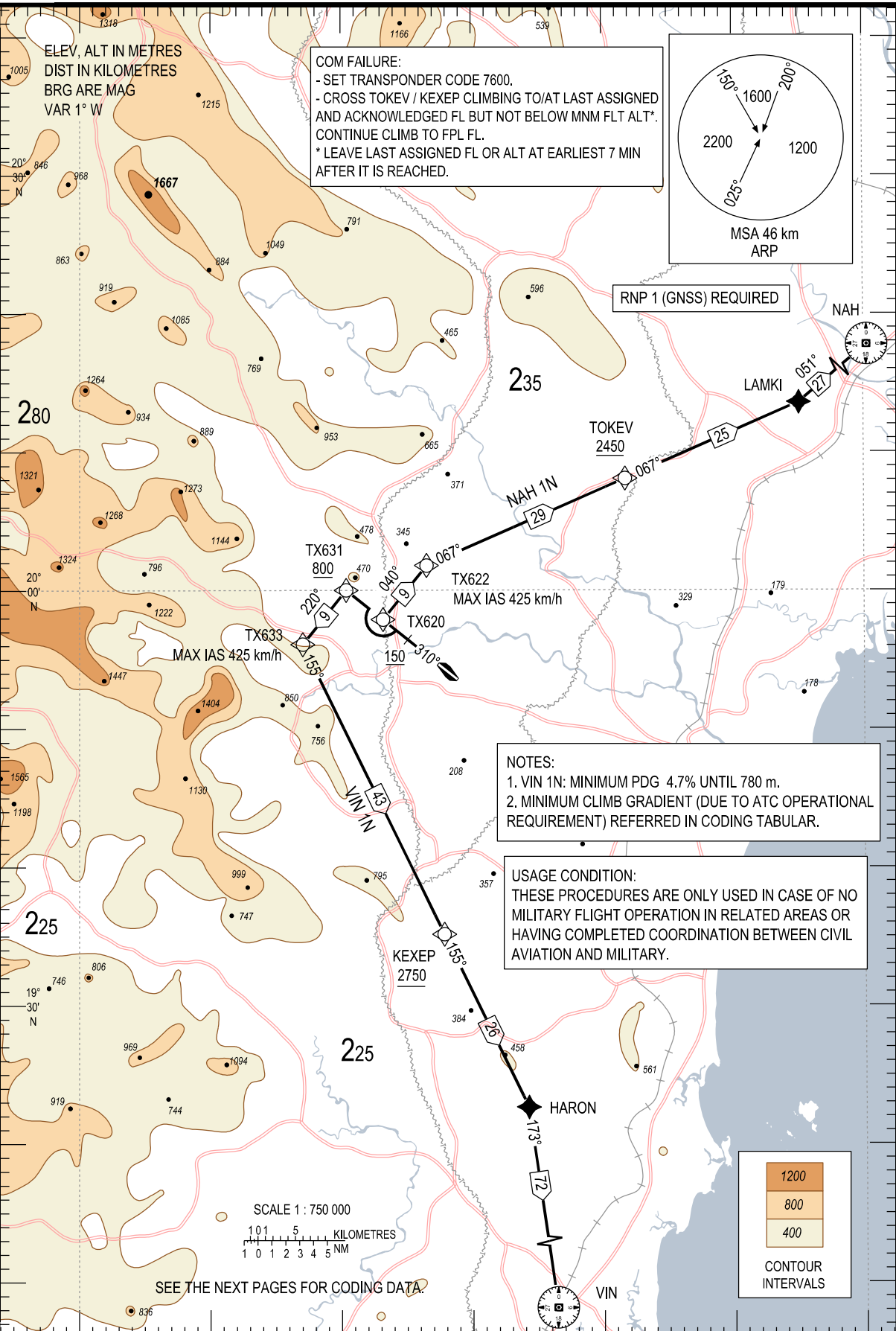
106° 00' E

ELEV, ALT IN METRES
DIST IN KILOMETRES
BRG ARE MAG
VAR 1° W

COM FAILURE:
- SET TRANSPONDER CODE 7600.
- CROSS TOKEV / KEXEP CLIMBING TO/AT LAST ASSIGNED
AND ACKNOWLEDGED FL BUT NOT BELOW MMN FLT ALT*.
CONTINUE CLIMB TO FPL FL.
* LEAVE LAST ASSIGNED FL OR ALT AT EARLIEST 7 MIN
AFTER IT IS REACHED.

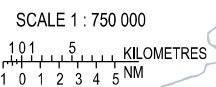


RNP 1 (GNSS) REQUIRED



NOTES:
1. VIN 1N: MINIMUM PDG 4.7% UNTIL 780 m.
2. MINIMUM CLIMB GRADIENT (DUE TO ATC OPERATIONAL
REQUIREMENT) REFERRED IN CODING TABULAR.

USAGE CONDITION:
THESE PROCEDURES ARE ONLY USED IN CASE OF NO
MILITARY FLIGHT OPERATION IN RELATED AREAS OR
HAVING COMPLETED COORDINATION BETWEEN CIVIL
AVIATION AND MILITARY.



SEE THE NEXT PAGES FOR CODING DATA.

