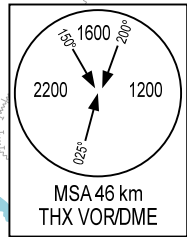


105°15'E

105°30'E

105°45'E

ELEV. ALT. HGT IN METRES
DIST IN KILOMETRES
DME DIST (D) IN NM
BRG ARE MAG
VAR 1°W



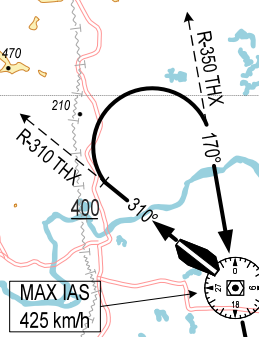
NAM HA
VOR/DME 115.5
NAH \equiv
20°23'14"N
106°07'04"E
0 m

KHOTI
20°04'12"N
105°45'11"E
R-054.0/D18.4 THX

NOTE: MINIMUM PDG 5.5% UNTIL 1200 m.

1850
048°
R-228 NAH

MAX IAS
425 km/h



THO XUAN
VOR/DME 114.8
THX \equiv
19°53'05"N
105°29'34"E
30 m

RWY 31

1. NAH 1F: CLIMB ON R-310 THX TO 400 m, TURN RIGHT TO INTERCEPT R-350 THX TO THX VOR/DME AT 1200 m OR ABOVE, TURN LEFT TO INTERCEPT R-054 THX TO KHOTI AT 1850 m OR ABOVE (MAX IAS 425 km/h), INTERCEPT R-228 NAH TO NAH VOR/DME.
2. VIN 1A: CLIMB ON R-310 THX TO 400 m, TURN RIGHT TO INTERCEPT R-350 THX TO THX VOR/DME AT 1200 m OR ABOVE (MAX IAS 425 km/h), INTERCEPT R-170 THX TO VUKHU AT 1850 m OR ABOVE, INTERCEPT R-354 VIN TO VIN VOR/DME.

VUKHU
19°35'48"N
105°33'16"E
R-169.5/D17.6 THX

VINH
VOR/DME 113.1
VIN \equiv
18°44'03"N
105°40'06"E
30 m

