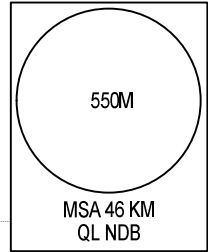


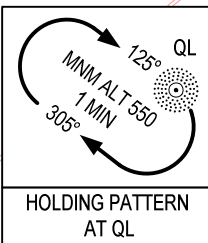
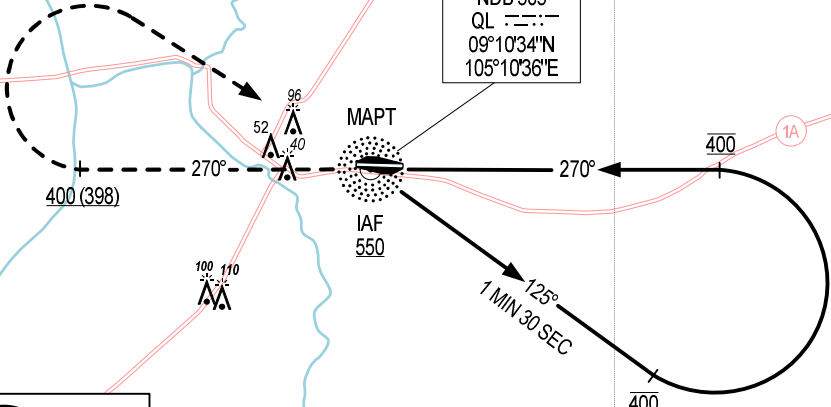
105°00'E 105°15'E

ELEV, ALT, HGT IN METRES  
DIST IN KM  
BRG ARE MAG  
VAR 0°

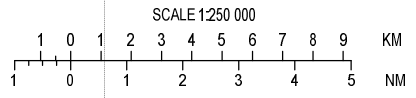


CA MAU  
NDB 305  
QL   
09°10'34"N  
105°10'36"E

MAPT  
IAF 550



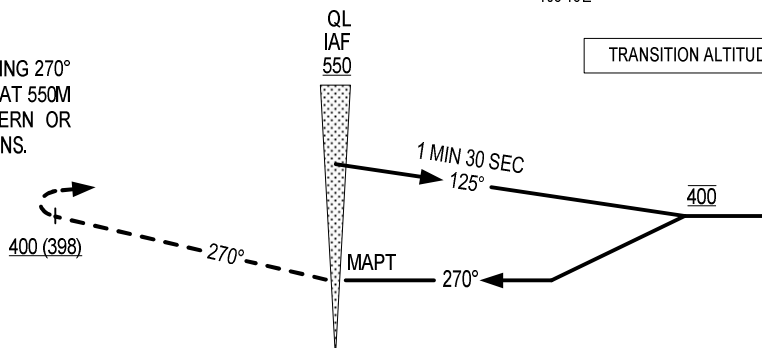
NOTE: THE FINAL APPROACH TRACK IS 2°  
OFFSET FROM EXTENDED RWY CENTER  
LINE.



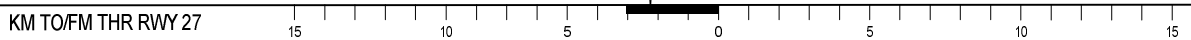
105°00'E 105°15'E

MISSED APPROACH:  
PASSING QL NDB CLIMB ON HEADING 270°  
TO 400M, TURN RIGHT TO QL NDB AT 550M  
OR ABOVE. JOIN HOLDING PATTERN OR  
FOLLOW CA MAU TWR INSTRUCTIONS.

TRANSITION ALTITUDE 2750



AD ELEV 2M  
KM TO/FM THR RWY 27



OCA (H)	C
STRAIGHT-IN APPROACH	200 (198)
CIRCLING	300 (298)