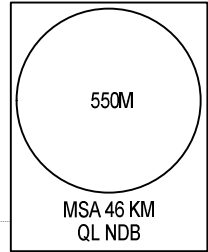


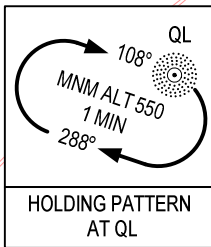
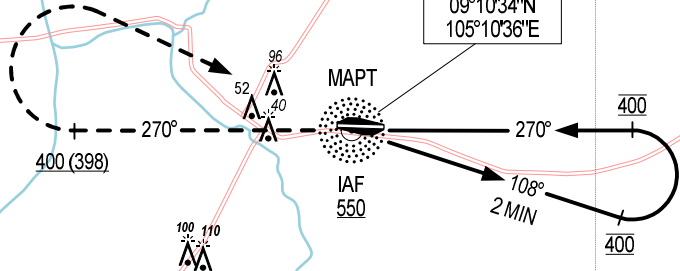
105°00'E

105°15'E

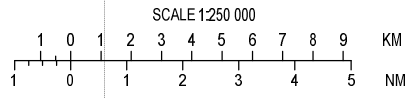
ELEV, ALT, HGT IN METRES
DIST IN KM
BRG ARE MAG
VAR 0°



CA MAU
NDB 305
QL
09°10'34"N
105°10'36"E



NOTE: THE FINAL APPROACH TRACK IS 2°
OFFSET FROM EXTENDED RWY CENTER LINE.

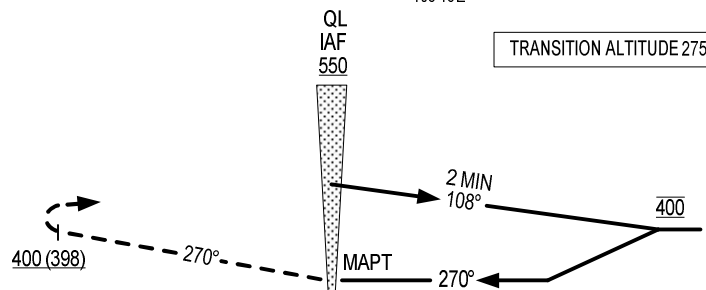


105°00'E

105°15'E

MISSED APPROACH:
PASSING QL NDB CLIMB ON HEADING 270°
TO 400M, TURN RIGHT TO QL NDB AT 550M
OR ABOVE. JOIN HOLDING PATTERN OR
FOLLOW CA MAU TWR INSTRUCTIONS.

TRANSITION ALTITUDE 2750



AD ELEV 2M

KM TO/FM THR RWY 27



OCA (H)	A	B
STRAIGHT-IN APPROACH	200 (198)	
CIRCLING	300 (298)	