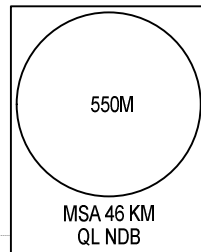


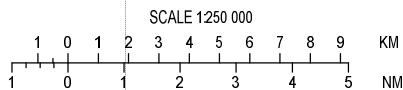
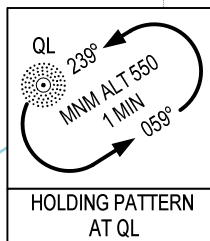
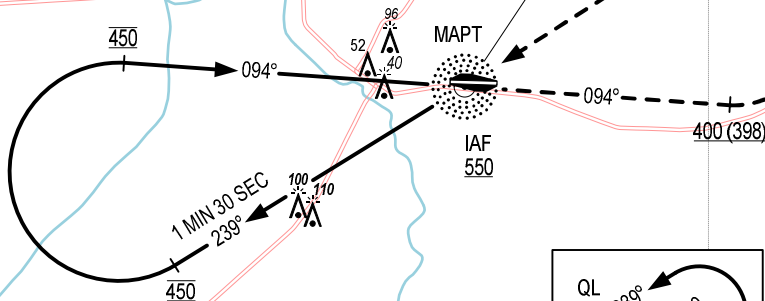
105°00'E

105°15'E

ELEV, ALT, HGT IN METRES  
DIST IN KM  
BRG ARE MAG  
VAR 0°



CAMAU  
NDB 305  
QL ---  
09°10'34"N  
105°10'36"E

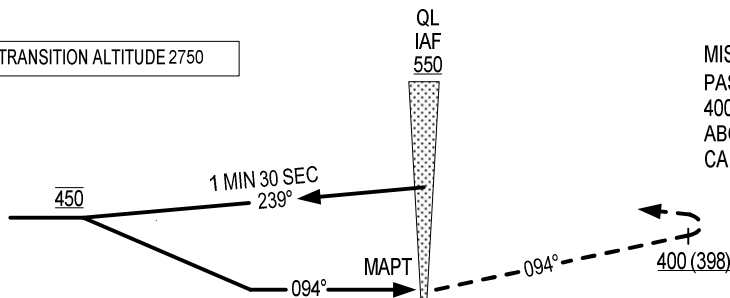


105°00'E

105°15'E

TRANSITION ALTITUDE 2750

MISSED APPROACH:  
PASSING QL NDB CLIMB ON HEADING 094° TO 400M, TURN LEFT TO QL NDB AT 550M OR ABOVE. JOIN HOLDING PATTERN OR FOLLOW CA MAU TWR INSTRUCTIONS.



AD ELEV 2M

KM TO/ FM THR RWY 09

OCA (H)	C
STRAIGHT-IN APPROACH	220 (218)
CIRCLING	300 (298)