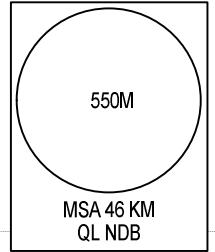
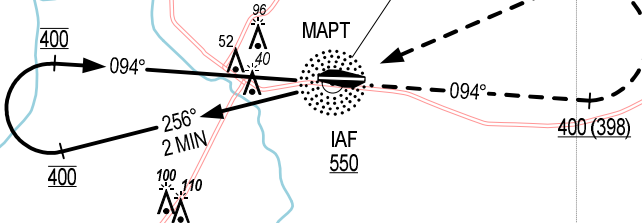


105°00'E 105°15'E

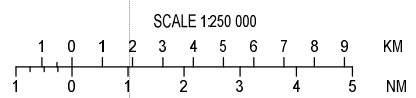
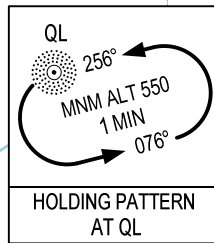
ELEV, ALT, HGT IN METRES
DIST IN KM
BRG ARE MAG
VAR 0°



CA MAU
NDB 305
QL ---
09°10'34"N
105°10'36"E

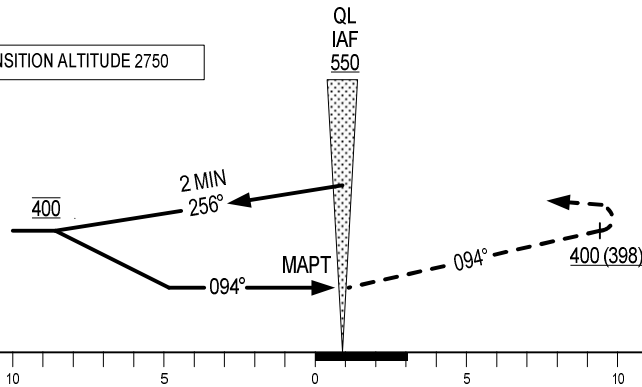


NOTE: THE FINAL APPROACH TRACK IS 2° OFFSET FROM EXTENDED RWY CENTER LINE.



105°00'E 105°15'E

TRANSITION ALTITUDE 2750



MISSED APPROACH:
PASSING QL NDB CLIMB ON HEADING 094° TO 400M, TURN LEFT TO QL NDB AT 550M OR ABOVE. JOIN HOLDING PATTERN OR FOLLOW CA MAU TWR INSTRUCTIONS.

AD ELEV 2M

KM TO/ FM THR RWY 09

OCA (H)	A	B
STRAIGHT-IN APPROACH	220 (218)	
CIRCLING	300 (298)	