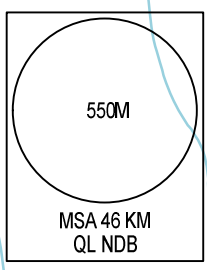
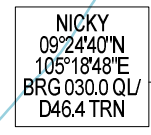
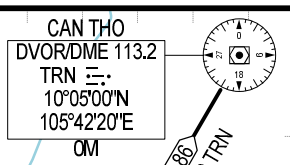


105°00'E 105°15'E 9°15'N 9°00'N

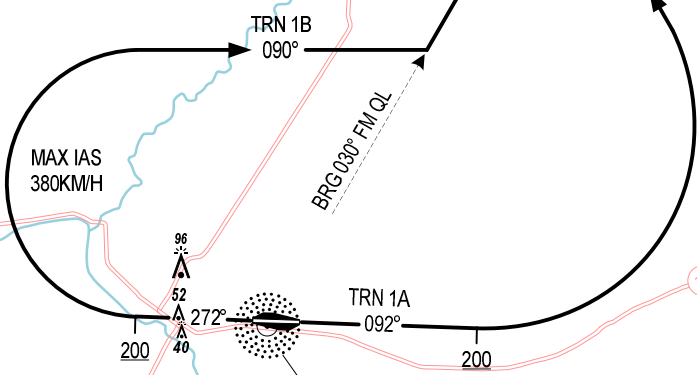


ELEV. ALT IN METRES
DIST IN KM
DME DIST (D) IN NM
BRG ARE MAG
VAR 0°



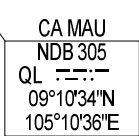
NOT TO SCALE

045



MAX IAS 380KM/H

BRG 030° FM QL



RWY 09
TRN 1A: MAINTAIN RWY HEADING CLIMB TO 200M, TURN LEFT HEADING 330° TO INTERCEPT BRG 030° FROM QL NDB TO NICKY AT 900M OR ABOVE, INTERCEPT R-210 TRN TO TRN DVOR/DME.
RWY 27
TRN 1B: MAINTAIN RWY HEADING CLIMB TO 200M, TURN RIGHT HEADING 090° (MAX IAS 380KM/H) TO INTERCEPT BRG 030° FROM QL NDB TO NICKY AT 900M OR ABOVE, INTERCEPT R-210 TRN TO TRN DVOR/DME. (MINIMUM PDG 5% UNTIL REACHING 200M)

045

