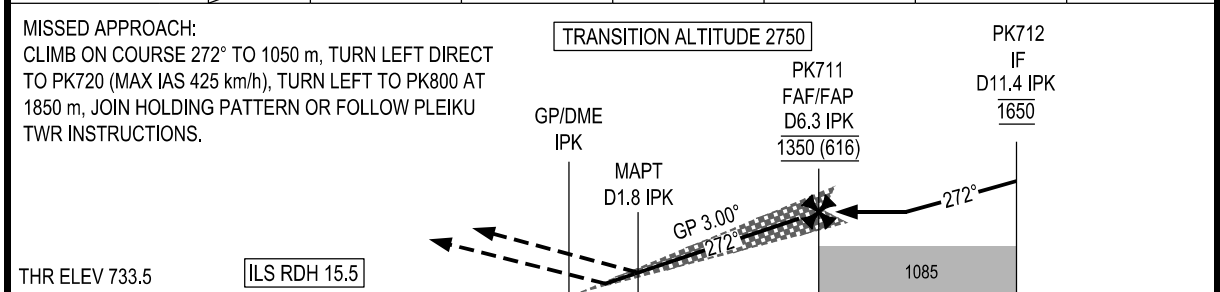


DME DIST	IPK DME	1.8	2.0	3.0	4.0	5.0	6.3
ALTITUDE (3.00°)		905	930	1025	1120	1220	1350



KILOMETRES TO/FM THR RWY 27

	6	0	6	12	18	24
--	---	---	---	----	----	----

OCA (H)		A	B	C	D							
STRAIGHT-IN APPROACH	CAT I	816 (82)	819 (85)	822 (88)	825 (91)	GS	km/h	150	200	250	300	350
	GP INOP	905 (171)				FAF - MAPT 8.5 km	min:s	3:24	2:33	2:02	1:42	1:27
CIRCLING		1100 (356)				RATE OF DESCENT (3.00°)	m/s	2.2	2.9	3.6	4.4	5.1

CIRCLING IS ONLY IN THE SOUTH OF RWY

SEE THE NEXT PAGES FOR CODING DATA