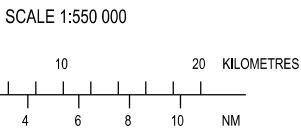
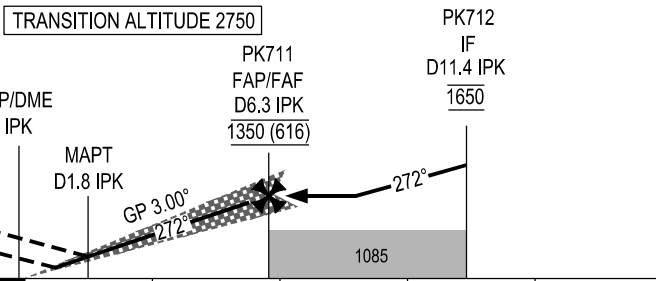


REQUIRED:  
1. DME.  
2. RNP 1 (GNSS) FOR INITIAL APPROACH AND MISSED APPROACH SEGMENTS.



DME DIST	IPK DME	1.8	2.0	3.0	4.0	5.0	6.3
ALTITUDE (3.00°)		905	930	1025	1120	1220	1350

MISSED APPROACH:  
CLIMB ON COURSE 272° TO 1050 m, TURN LEFT DIRECT TO PK720 (MAX IAS 425 km/h), TURN LEFT TO PK800 AT 1850 m, JOIN HOLDING PATTERN OR FOLLOW PLEIKU TWR INSTRUCTIONS.



THR ELEV 733.5 ILS RDH 15.5

KILOMETRES TO/FM THR RWY 27

OCA (H)		A	B	C	D
STRAIGHT-IN APPROACH	CAT I	816 (82)	819 (85)	822 (88)	825 (91)
	GP INOP	905 (171)			
CIRCLING		1100 (356)			

GS	km/h	150	200	250	300	350
FAF - MAPT 8.5 km	min:s	3:24	2:33	2:02	1:42	1:27
RATE OF DESCENT (3.00°)	m/s	2.2	2.9	3.6	4.4	5.1

CIRCLING IS ONLY IN THE SOUTH OF RWY

SEE THE NEXT PAGES FOR CODING DATA