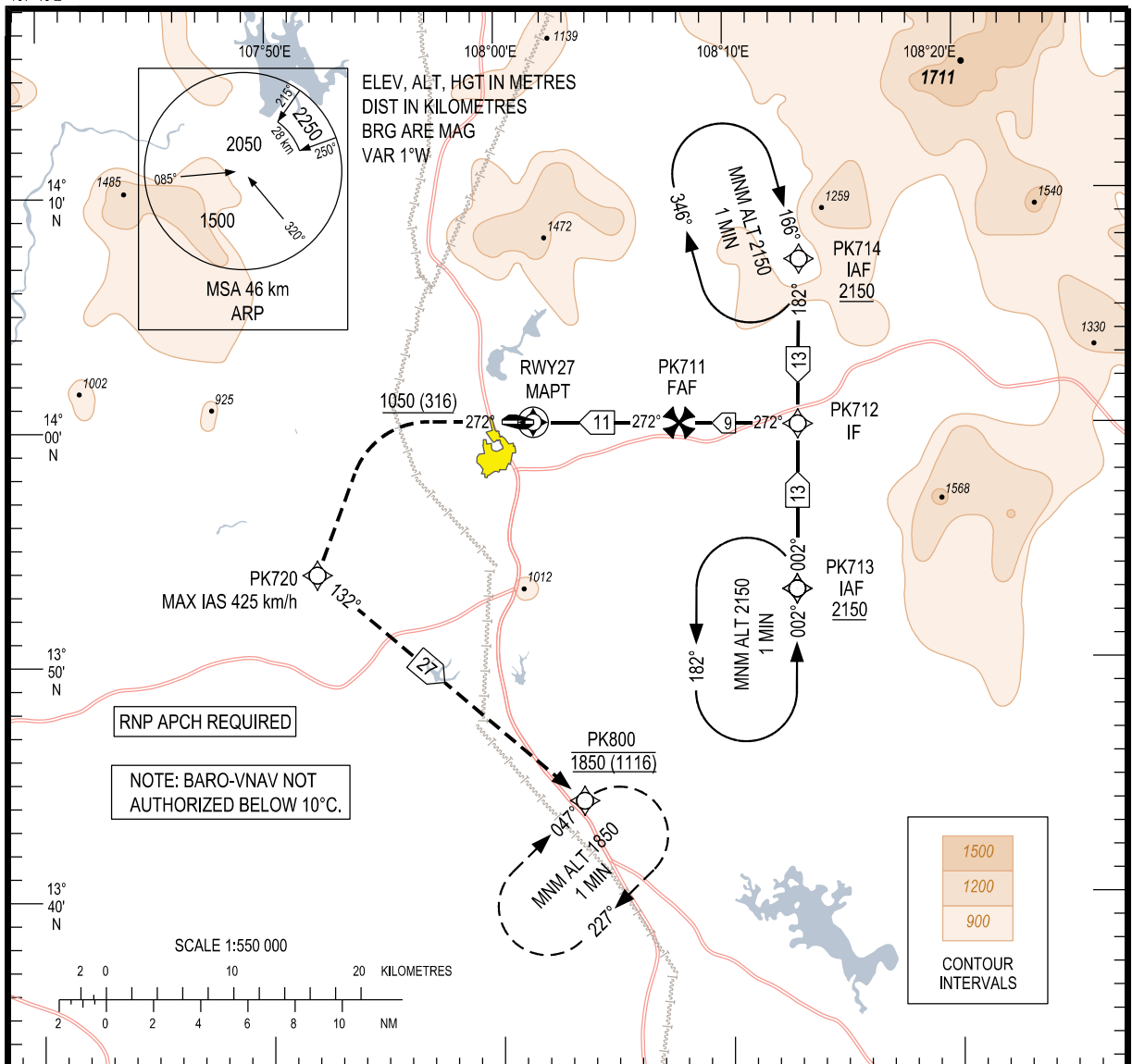


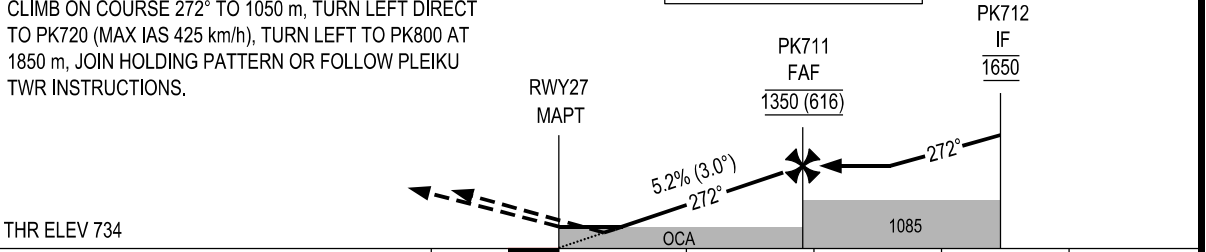
107°40'E



KILOMETRES TO NEXT WPT	RWY27	3.0	4.0	6.0	8.0	10.0	11.5
ALTITUDE		905	960	1065	1170	1275	1350

**MISSED APPROACH:**  
CLIMB ON COURSE 272° TO 1050 m, TURN LEFT DIRECT TO PK720 (MAX IAS 425 km/h), TURN LEFT TO PK800 AT 1850 m, JOIN HOLDING PATTERN OR FOLLOW PLEIKU TWR INSTRUCTIONS.

TRANSITION ALTITUDE 2750



	OCA (H)	A	B	C	D
LNAV/VNAV		860 (126)			
LNAV		905 (171)			
CIRCLING		1100 (356)			

GS	km/h	150	200	250	300	350
RATE OF DESCENT 5.2% (3.0°)	m/s	2.2	2.9	3.6	4.4	5.1

CIRCLING IS ONLY IN THE SOUTH OF RWY

SEE THE NEXT PAGES FOR CODING DATA