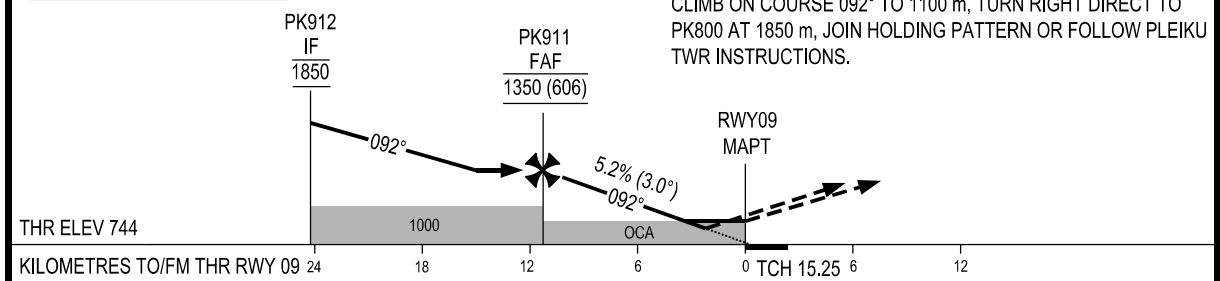


**TRANSITION ALTITUDE 2750**

**MISSED APPROACH:**  
CLIMB ON COURSE 092° TO 1100 m, TURN RIGHT DIRECT TO PK800 AT 1850 m, JOIN HOLDING PATTERN OR FOLLOW PLEIKU TWR INSTRUCTIONS.



GS	km/h	150	200	250	300	350
RATE OF DESCENT 5.2% (3.0°)	m/s	2.2	2.9	3.6	4.4	5.1

CIRCLING IS ONLY IN THE SOUTH OF RWY

SEE THE NEXT PAGES FOR CODING DATA