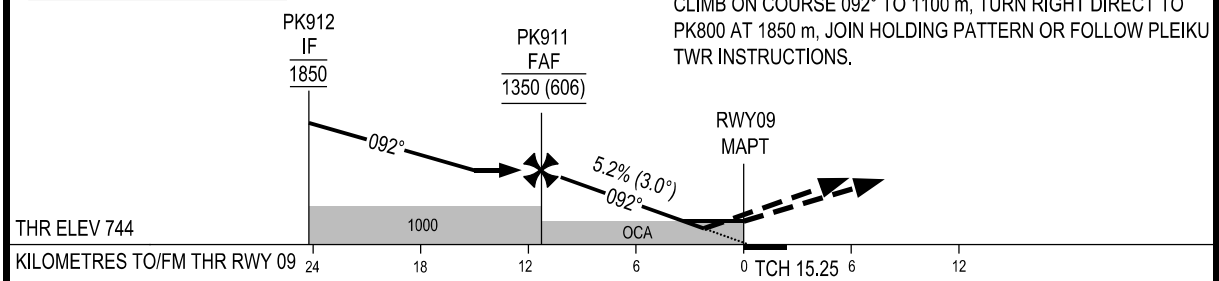


KILOMETRES TO NEXT WPT	RWY09	3.3	4.0	6.0	8.0	10.0	11.3
ALTITUDE		935	970	1075	1180	1285	1350

TRANSITION ALTITUDE 2750

MISSED APPROACH:
CLIMB ON COURSE 092° TO 1100 m, TURN RIGHT DIRECT TO PK800 AT 1850 m, JOIN HOLDING PATTERN OR FOLLOW PLEIKU TWR INSTRUCTIONS.



THR ELEV 744		1000		OCA		15.25	6	12
KILOMETRES TO/FM THR RWY 09	24	18	12	6	0	15.25	6	12

OCA (H)	A	B	C	D
LNAV/VNAV	875 (131)			
LNAV	935 (191)			
CIRCLING	1100 (356)			

GS	km/j	150	200	250	300	350
RATE OF DESCENT 5.2% (3.0°)	m/s	2.2	2.9	3.6	4.4	5.1

CIRCLING IS ONLY IN THE SOUTH OF RWY

SEE THE NEXT PAGES FOR CODING DATA