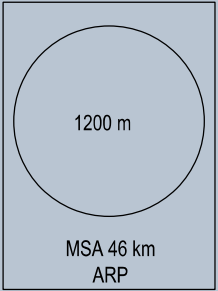


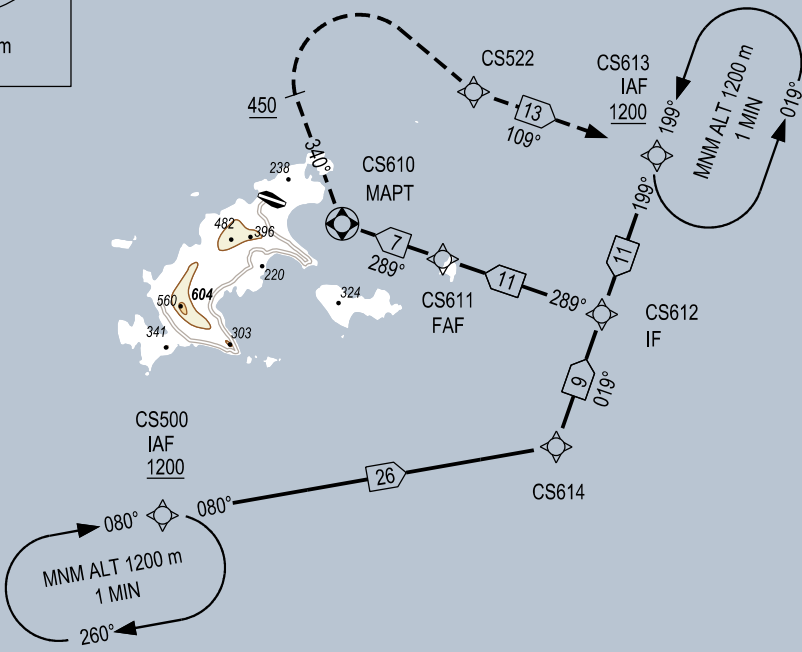
106°30'E 106°40'E 106°50'E 107°00'E

08° 50' N
08° 40' N
08° 30' N
08° 20' N

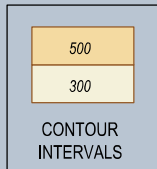
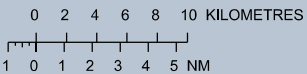


ELEV, ALT, HGT IN METRES
DIST IN KILOMETRES
BRG ARE MAG
VAR 0°

RNP APCH REQUIRED



SCALE 1 : 500 000

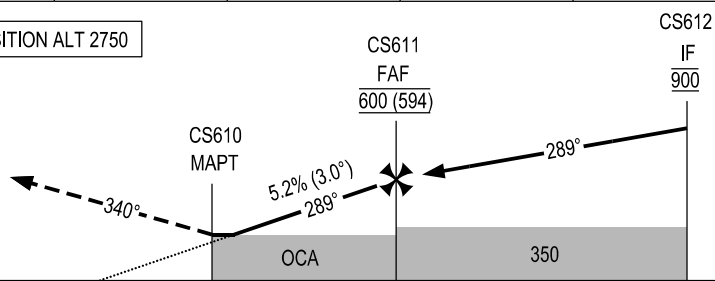


KILOMETRES TO NEXT WPT	CS610	7.0	6.0	4.0	2.0	0.8
ALTITUDE		600	545	440	335	275

MISSED APPROACH:
CLIMB ON COURSE 340° TO 450 m, TURN
RIGHT DIRECT TO CS522 THEN TO CS613
AT 1200 m. JOIN HOLDING PATTERN OR
FOLLOW CON SON TWR INSTRUCTIONS.

TRANSITION ALT 2750

THR ELEV 6 m **TCH 15.25**



KILOMETRES TO/FM THR RWY 29		6	0	6	12	18
-----------------------------	--	---	---	---	----	----

OCA(H)	A	B	C	GS	km/h	100	150	200	250	300	350
LNAV	275 (269)			FAF - MAPT (7.0 km)	min:s	4:12	2:48	2:06	1:41	1:24	1:12
CIRCLING	455 (449)			RATE OF DESCENT (5.2%)	m/s	1.5	2.2	2.9	3.6	4.4	5.1

CIRCLING IS ONLY IN THE NORTH OF RUNWAY.

SEE THE NEXT PAGES FOR CODING DATA.