

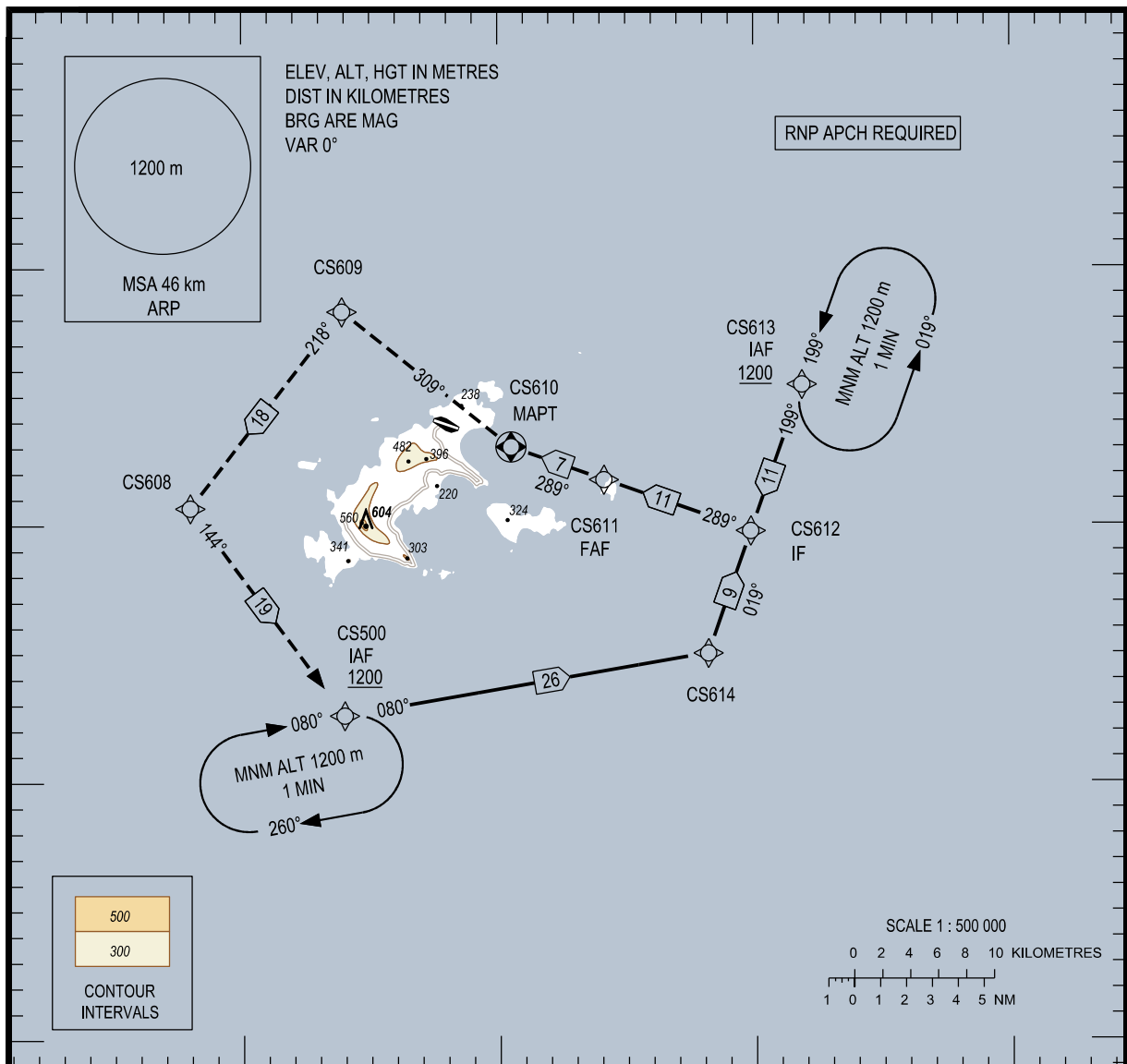
106°30'E 106°40'E 106°50'E 107°00'E

08° 50' N

08° 40' N

08° 30' N

08° 20' N



KILOMETRES TO NEXT WPT	CS610	7.0	6.0	4.0	2.0	0.8
ALTITUDE		600	545	440	335	275

MISSED APPROACH:

FLY ON COURSE 309° TO CS609, TURN LEFT TO CS608 THEN TO CS500 AT 1200 m. JOIN HOLDING PATTERN OR FOLLOW CON SON TWR INSTRUCTIONS.

TRANSITION ALT 2750

THR ELEV 6 m

TCH 15.25

KILOMETRES TO/FM THR RWY 29	6	0	6	12	18
-----------------------------	---	---	---	----	----

OCA(H)	A	B	C	GS	km/h	100	150	200	250	300	350
LNAV	275 (269)			FAF - MAPT (7.0 km)	min:s	4:12	2:48	2:06	1:41	1:24	1:12
CIRCLING	455 (449)			RATE OF DESCENT (5.2%)	m/s	1.5	2.2	2.9	3.6	4.4	5.1

CIRCLING IS ONLY IN THE NORTH OF RUNWAY.

SEE THE NEXT PAGES FOR CODING DATA.