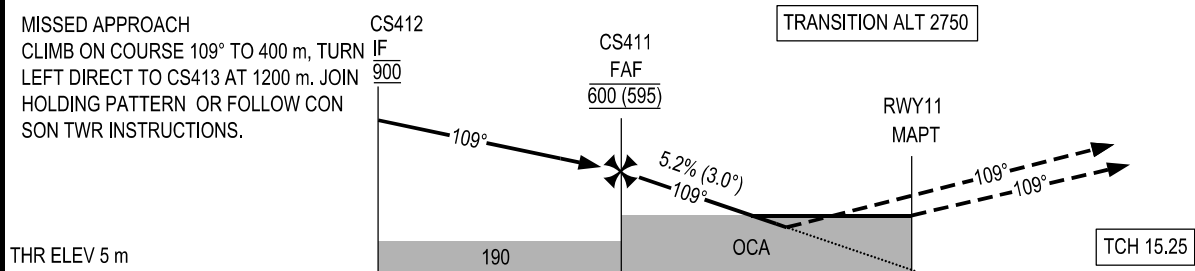


KILOMETRES TO NEXT WPT	RWY11	11.1	10.0	8.0	6.0	4.8
ALTITUDE		600	545	440	335	270



THR ELEV 5 m				KILOMETRES TO/FM THR RWY 11							
				18	12	6	0	6			
OCA(H)	A	B	C	GS	km/h	100	150	200	250	300	350
LNAV/VNAV	270 (265)			FAF - MAPT (11.1 km)	min:s	6:40	4:26	3:20	2:40	2:13	1:54
LNAV	340 (334)			RATE OF DESCENT (5.2%)	m/s	1.5	2.2	2.9	3.6	4.4	5.1
CIRCLING	455 (449)										

CIRCLING IS ONLY IN THE NORTH OF RUNWAY. SEE THE NEXT PAGES FOR CODING DATA.