

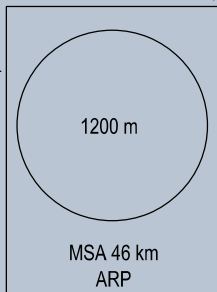
106°20'E 106°30'E 106°40'E 106°50'E

09° 00' N

08° 50' N

08° 40' N

08° 30' N

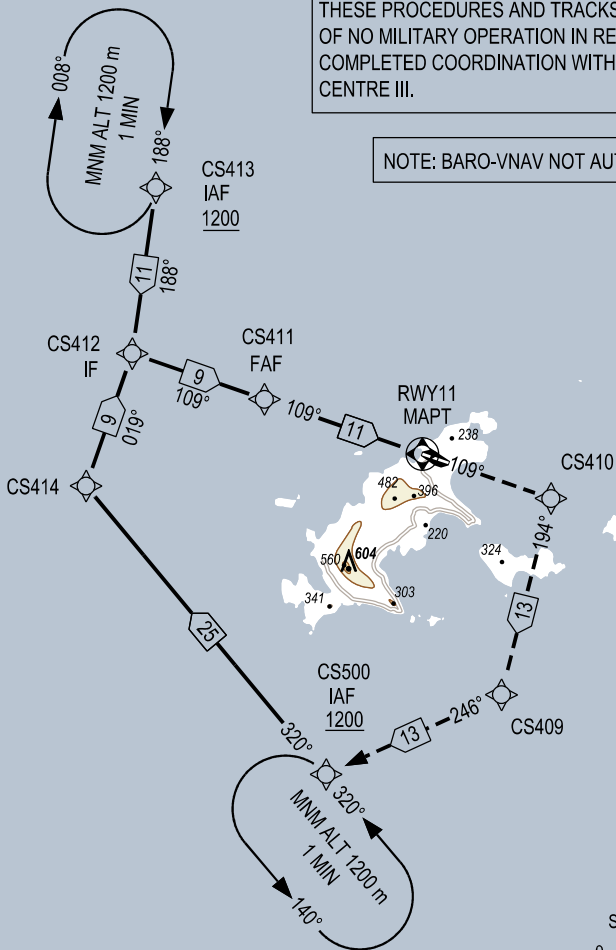


ELEV, ALT, HGT IN METRES  
DIST IN KILOMETRES  
BRG ARE MAG  
VAR 0°

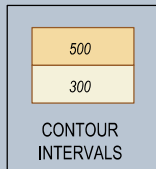
**USAGE CONDITION:**  
THESE PROCEDURES AND TRACKS ARE ONLY USED IN CASE OF NO MILITARY OPERATION IN RELATED AREAS OR HAVING COMPLETED COORDINATION WITH REGIONAL AIR COMMAND CENTRE III.

**NOTE:** BARO-VNAV NOT AUTHORIZED BELOW 10°C

**RNP APCH REQUIRED**

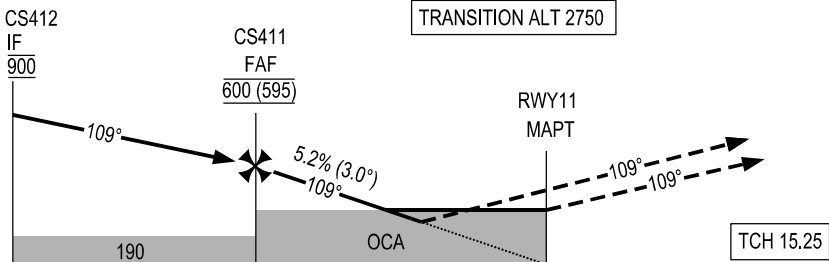


SCALE 1 : 500 000  
0 2 4 6 8 10 KILOMETRES  
1 0 1 2 3 4 5 NM



KILOMETRES TO NEXT WPT	RWY11	11.1	10.0	8.0	6.0	4.8
ALTITUDE		600	545	440	335	270

**MISSED APPROACH:**  
FLY ON COURSE 109° TO CS410, TURN RIGHT TO CS409 THEN TO CS500 AT 1200 m. JOIN HOLDING PATTERN OR FOLLOW CON SON TWR INSTRUCTIONS.



THR ELEV 5 m

KILOMETRES TO/FM THR RWY 11

OCA(H)	A	B	C	GS	km/h	100	150	200	250	300	350
LNAV/VNAV	270 (265)			FAF - MAPT (11.1 km)	min:s	6:40	4:26	3:20	2:40	2:13	1:54
LNAV	340 (334)			RATE OF DESCENT (5.2%)	m/s	1.5	2.2	2.9	3.6	4.4	5.1
CIRCLING	455 (449)										

CIRCLING IS ONLY IN THE NORTH OF RUNWAY.

SEE THE NEXT PAGES FOR CODING DATA.