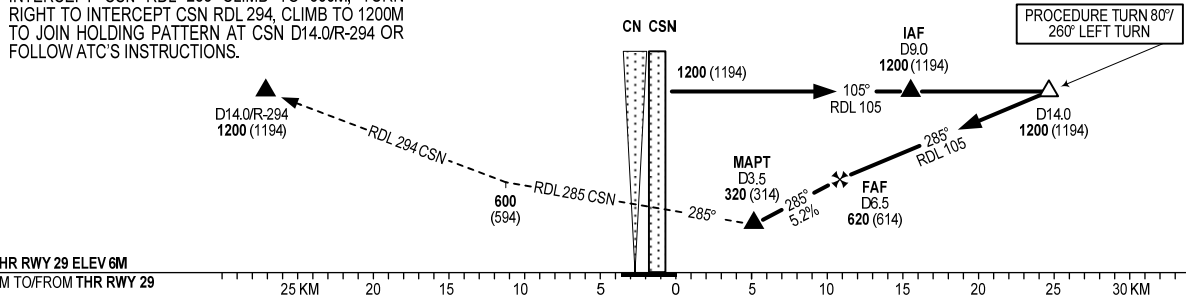


MISSED APPROACH

MAINTAIN PRESENT HEADING, PASSING CSN TO INTERCEPT CSN RDL 285 CLIMB TO 600M, TURN RIGHT TO INTERCEPT CSN RDL 294, CLIMB TO 1200M TO JOIN HOLDING PATTERN AT CSN D14.0/R-294 OR FOLLOW ATC'S INSTRUCTIONS.

TRANSITION ALTITUDE: 2750



FAF-MAPT 2.8NM (5185.6M)

OCA (H)	A	B	GROUND SPEED							
			KMH	125	150	175	200	225	250	
STRAIGHT-IN APPROACH	320 (314)		TIME	M:S	03:06	02:35	02:13	01:56	01:43	01:33
CIRCLING	400 (394)		RATE OF DESCENT	M/S	1.8	2.1	2.5	2.8	3.2	3.6
CIRCLING ONLY IN THE NORTH OF RWY			DISTANCE		DME		6.5	5.0	4.0	3.5
			HEIGHT		M		614	465	368	314