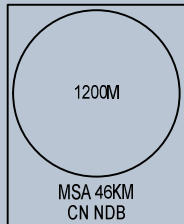


106°30'E

106°45'E

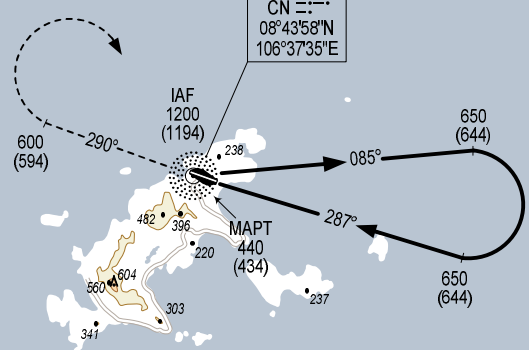
ELEV, ALT, HGT IN METRES  
DIST IN KM  
BRG ARE MAG  
VAR 0°



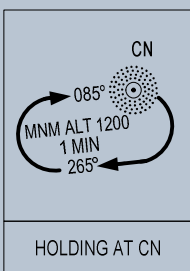
**NOTE:**

- THE FINAL APPROACH TRACK IS 2° OFFSET FROM EXTENDED RWY CENTER LINE.
- OCA/H IS EVALUATED BASED ON OBSTACLES (MOUNTAINS) IN THE MISSED APPROACH PROTECTION AREA AT THE SOUTH EAST OF AERODROME.
- TERRAIN ELEVATION INCLUDES VEGETATION HEIGHT 15M.

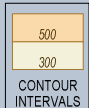
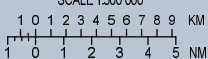
**CONSON  
NDB 375  
CN ---  
08°43'58"N  
106°37'35"E**



**BASE TURN  
2 MIN 30 SEC**



SCALE 1:500 000



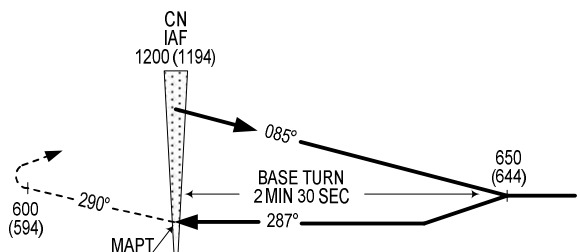
106°30'E

106°45'E

**MISSED APPROACH:**

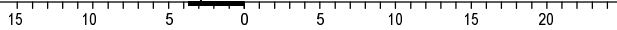
MAINTAIN FINAL APPROACH TRACK PASSING CN NDB, CLIMB ON HEADING 290° TO 600M, TURN RIGHT TO CN NDB AT 1200M, JOIN HOLDING PATTERN OR FOLLOW CON SON TWR INSTRUCTIONS.

**TRANSITION ALTITUDE 2750**



AD ELEV 6M

KM FROM/TO THR RWY 29



OCA (H)	C
STRAIGHT-IN APPROACH	440 (434)
CIRCLING	455 (449)

CIRCLING IS ONLY IN THE NORTH OF RWY