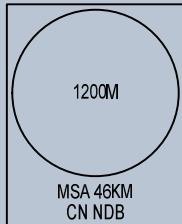


106°30'E

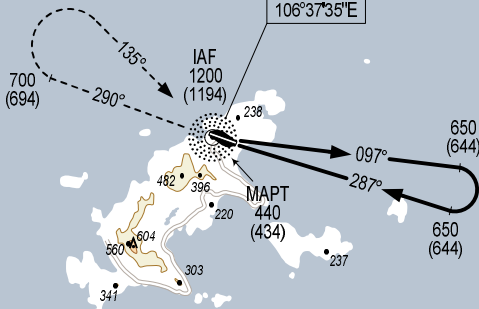
106°45'E

ELEV, ALT, HGT IN METRES
DIST IN KM
BRG ARE MAG
VAR 0°

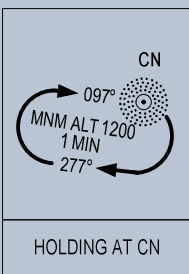


NOTE:
- THE FINAL APPROACH TRACK IS 2° OFFSET FROM EXTENDED RWY CENTER LINE.
- OCAH IS EVALUATED BASED ON OBSTACLES (MOUNTAINS) IN THE MISSED APPROACH PROTECTION AREA AT THE SOUTH EAST OF AERODROME.
- TERRAIN ELEVATION INCLUDES VEGETATION HEIGHT 15M.

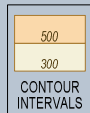
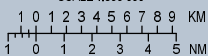
**CONSON
NDB 375
CN ---
08°43'58"N
106°37'35"E**



**BASE TURN
3 MIN 30 SEC**



SCALE 1:500 000



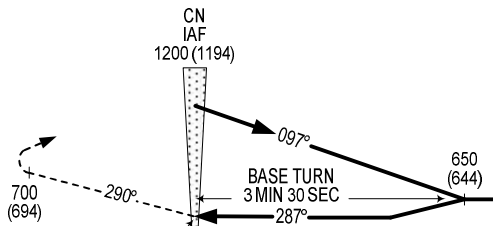
106°30'E

106°45'E

MISSED APPROACH:

MAINTAIN FINAL APPROACH TRACK PASSING CN NDB, CLIMB ON HEADING 290° TO 700M, TURN RIGHT TO INTERCEPT BRG 135° TO CN NDB AT 1200M, JOIN HOLDING PATTERN OR FOLLOW CON SON TWR INSTRUCTIONS.

TRANSITION ALTITUDE 2750



AD ELEV 6M

KM FROM/TO THR RWY 29



OCA (H)	A	B
STRAIGHT-IN APPROACH	440 (434)	
CIRCLING	455 (449)	

CIRCLING IS ONLY IN THE NORTH OF RWY