

106°30'E

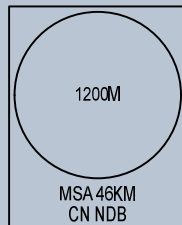
106°45'E

09° 00' N

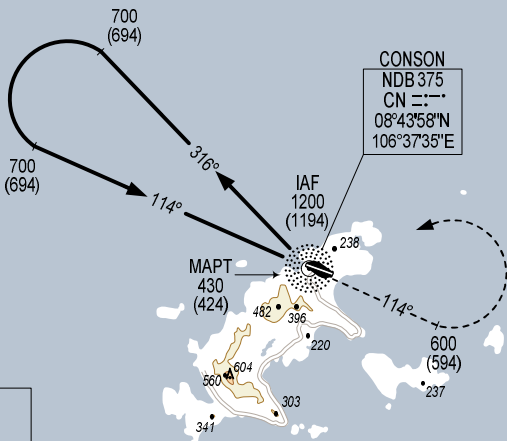
08° 45' N

08° 30' N

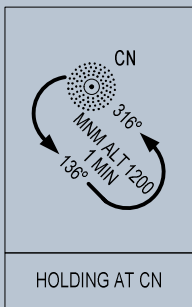
ELEV, ALT, HGT IN METRES
DIST IN KM
BRG ARE MAG
VAR 0°



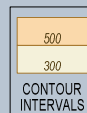
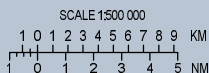
**BASE TURN
2 MIN 30 SEC**



**CONSON
NDB 375
CN ---
08°43'58"N
106°37'35"E**



**NOTE:
THE FINAL APPROACH TRACK IS 5°
OFFSET FROM EXTENDED RWY
CENTER LINE.**



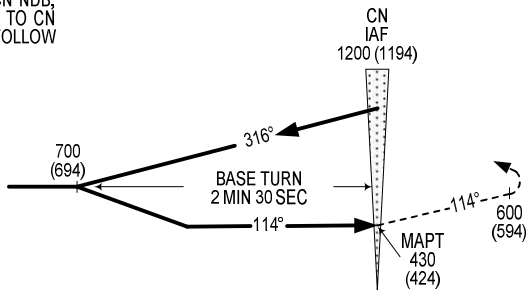
106°30'E

106°45'E

MISSED APPROACH:

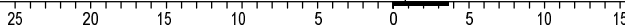
MAINTAIN FINAL APPROACH TRACK PASSING CN NDB,
CLIMB ON HEADING 114° TO 600M, TURN LEFT TO CN
NDB AT 1200M, JOIN HOLDING PATTERN OR FOLLOW
CON SON TWR INSTRUCTIONS.

TRANSITION ALTITUDE 2750



AD ELEV 6M

KM TO/FROM THR RWY 11



OCA (H)	C
STRAIGHT-IN APPROACH	430 (424)
CIRCLING	455 (449)

CIRCLING IS ONLY IN THE NORTH OF RWY