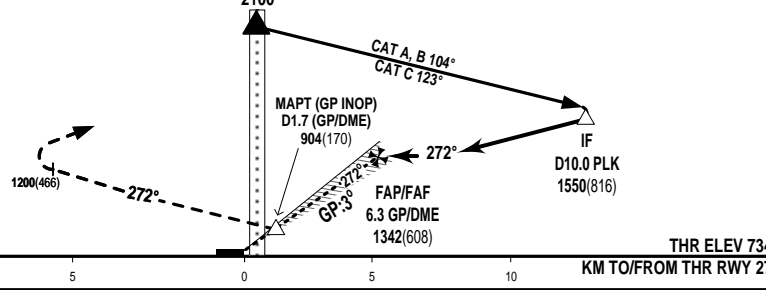


**- VOR/DME REQUIRED
- HORIZONTAL COVERAGE OF GP IS LIMITED FROM -5 DEGREES LEFT TO 8 DEGREES RIGHT OF RWY FOLLOWING APPROACH COURSE
- VERTICAL COVERAGE OF GP IS AVAILABLE FROM 1.35 DEGREES TO 4.83 DEGREES**

**MISSED APPROACH
MAINTAIN PRESENT HEADING 272° UNTIL PASSING 1200M TURN LEFT TO PLK VOR/DME CLIMB TO 2100M TO JOIN HOLDING PATTERN OR FOLLOW PLEIKU ATC'S INSTRUCTIONS.**

**PLK DVOR/DME
IAF 2100
TRANSITION LEVEL FL100**



ILS RDH: 15.6M

OCA/H	A	B	C
CAT I	823(89)	826(92)	829(95)
GP INOP	904(170)		
CIRCLING	1100(356)		

FAP - MAPT = 4.6NM (8819m)

GS	KM/H	100	150	200	250	300
TIME	MIN:SEC	5:00	3:20	2:30	2:00	1:40
RATE OF DESCENT	M/S	1.46	2.18	2.91	3.64	4.37

CIRCLING IS ONLY USE IN THE SOUTH OF RWY.