

106°20'E 106°30'E 106°40'E 106°50'E 107°00'E

09° 40' N

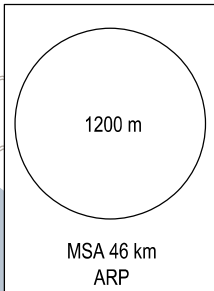
09° 30' N

09° 20' N

09° 00' N

08° 50' N

08° 40' N



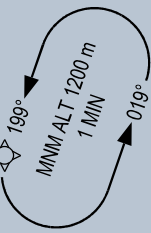
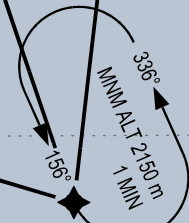
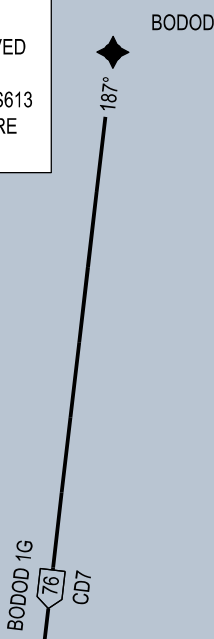
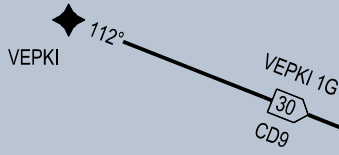
COM FAILURE
- SET TRANSPONDER CODE 7600.
- PROCEED TO CS613, AT ACKNOWLEDGED OR LAST RECEIVED EXPECTED APPROACH TIME (EAT), OR IF NO EAT HAS BEEN RECEIVED THEN AT FPL EAT, DESCEND TO 1200 m IN THE CS613 HLDG PATTERN. CARRY OUT INSTRUMENT APCH PROCEDURE RWY 29 AS EXPECTED.

ELEV, ALT IN METRES
DIST IN KILOMETRES
BRG ARE MAG
VAR 0°

RNP 1 (GNSS) REQUIRED

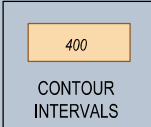
NOTE:
ATC CAN ISSUE CLEARANCE FOR AIRCRAFT TO SHORTEN FLIGHT PROCEDURE WHEN AIR TRAFFIC CONDITION PERMITS AND PRESCRIBED OBSTACLE CLEARANCE WILL EXIST AT ALL TIMES.

USAGE CONDITION:
THESE PROCEDURES AND TRACKS ARE ONLY USED IN CASE OF NO MILITARY OPERATION IN RELATED AREAS OR HAVING COMPLETED COORDINATION WITH REGIONAL AIR COMMAND CENTRE III.

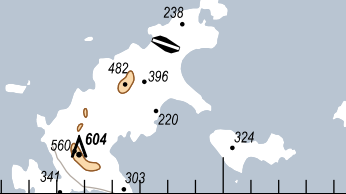
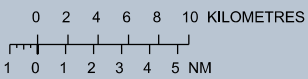


045

090



SCALE 1 : 500 000



SEE THE NEXT PAGES FOR CODING DATA.