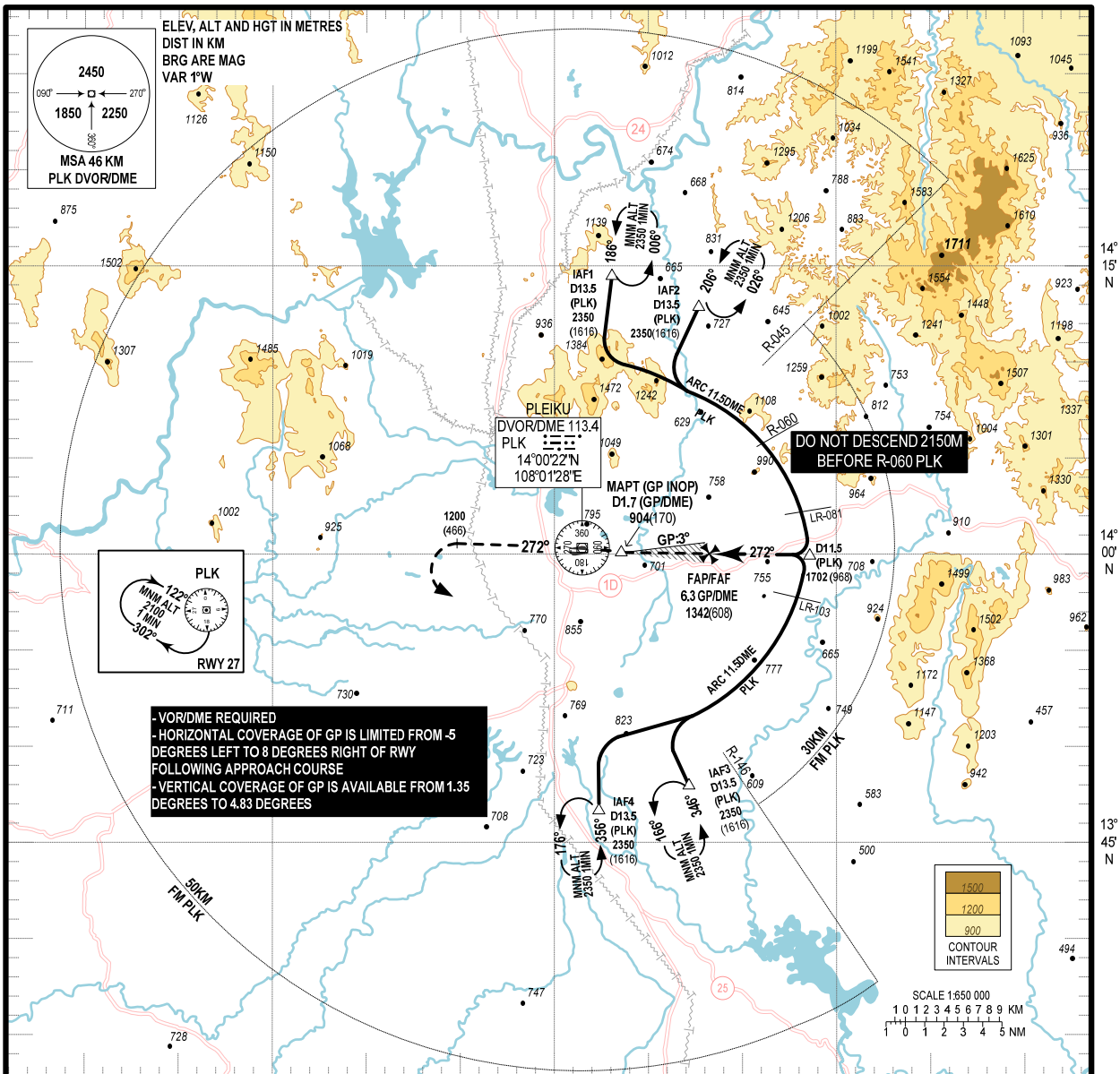


107°45'E

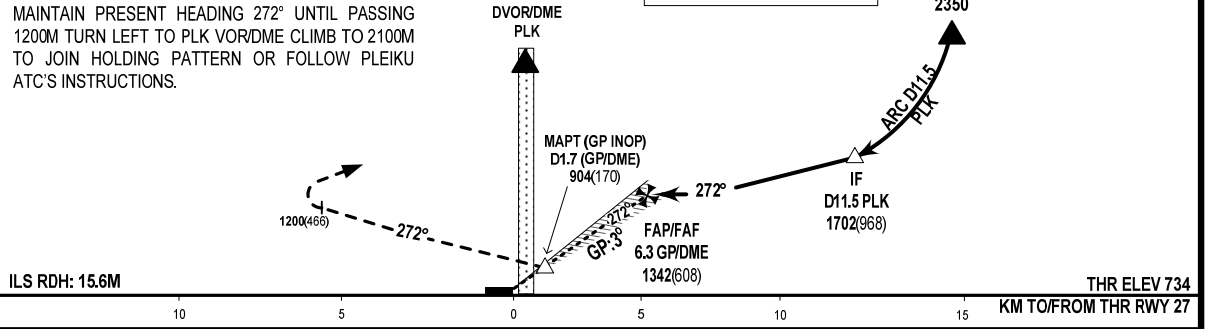
108°00'E

108°15'E



MISSED APPROACH
MAINTAIN PRESENT HEADING 272° UNTIL PASSING 1200M TURN LEFT TO PLK VOR/DME CLIMB TO 2100M TO JOIN HOLDING PATTERN OR FOLLOW PLEIKU ATC'S INSTRUCTIONS.

TRANSITION LEVEL FL100



OCA/H	A	B	C
CAT I	823(89)	826(92)	829(95)
GP INOP	904(170)		
CIRCLING	1100(356)		

FAF - MAPT = 4.6NM (8819m)

GS	KM/H	100	150	200	250	300
TIME	MIN:SEC	5:00	3:20	2:30	2:00	1:40
RATE OF DESCENT	M/S	1.46	2.18	2.91	3.64	4.37

CIRCLING IS ONLY USE IN THE SOUTH OF RWY.