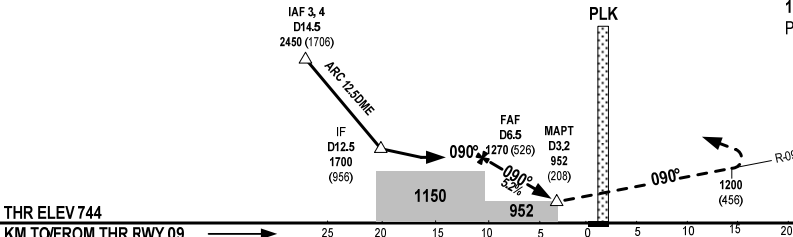


TRANSITION LEVEL FL100

**MISSED APPROACH**  
MAINTAIN PRESENT HEADING, CLIMB TO 2100M  
PASS PLK TO INTERCEPT R-090, AFTER PASS  
1200M TURN RIGHT PLK TO JOIN HOLDING  
PATTERN OR FOLLOW ATC'S INSTRUCTIONS.



THR ELEV 744  
KM TO/FROM THR RWY 09

OCA/H			
TYPE OF AIRCRAFT	A	B	C
STRAIGHT-IN APPROACH	952(208)		
CIRCLING	1100(356)		

CIRCLING IS ONLY USE IN THE SOUTH OF RWY.

FAF - MAPT 3.3NM (6111M)						
GS	KMH	100	150	200	250	300
TIME	MIN:SEC	3:40	2:27	1:50	1:28	1:13
RATE OF DESCENT	M/S	1.46	2.18	2.91	3.63	4.36
DISTANCE	DME	6.5	6	5	4	3.2
HEIGHT (QFE)	M	526	479	382	285	208