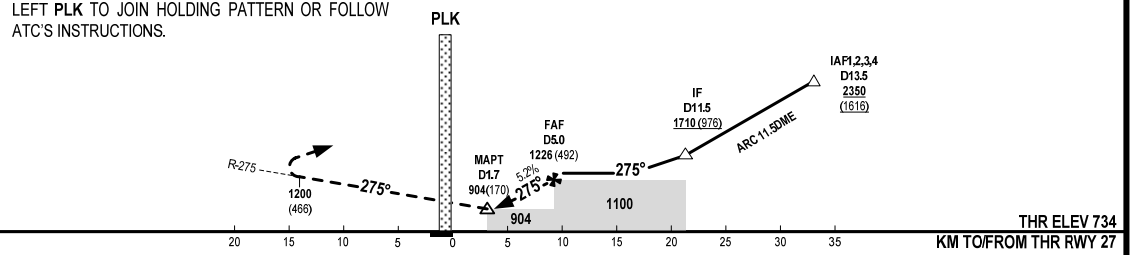


**MISSED APPROACH**  
MAINTAIN PRESENT HEADING, CLIMB TO 2100M PASS PLK TO INTERCEPT R-275, AFTER PASS 1200M TURN LEFT PLK TO JOIN HOLDING PATTERN OR FOLLOW ATC'S INSTRUCTIONS.

TRANSITION LEVEL FL100



THR ELEV 734

KM TO/FROM THR RWY 27

FAF - MAPT 3.3NM (6111M)

OCA/H			
TYPE OF AIRCRAFT	A	B	C
STRAIGHT-IN APPROACH	904(170)		
CIRCLING	1100(356)		

CIRCLING IS ONLY USE IN THE SOUTH OF RWY.

GS	KMH	100	150	200	250	300
TIME	MIN-SEC	3:40	2:27	1:50	1:28	1:13
RATE OF DESCENT	M/S	1.46	2.18	2.91	3.64	4.37
DISTANCE	DME	5.0	4	3	1.7	
HEIGHT (QFE)	M	492	400	304	170	