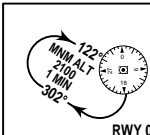
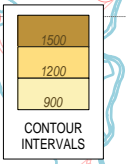


**RWY 09/27**

1. **MADEN ONE ALPHA ARRIVAL (MADEN 1A):** FM MADEN AT 2750M OR ABOVE, ON TRACK 356°(R-176 PLK) TO PLK AT 2100M, CARRY OUT APPROACH PROCEDURE VOR Z RWY 09 OR VOR Z, ILS Z RWY 27 OR JOIN HOLDING PATTERN AT IAF FOLLOW ATC'S INSTRUCTIONS.
2. **GIALI ONE ALPHA ARRIVAL (GIALI 1A):** FM GIALI AT 2750M OR ABOVE, ON TRACK 346°(R-166 PLK) TO PLK AT 2100M, CARRY OUT APPROACH PROCEDURE VOR Z RWY 09 OR VOR Z, ILS Z RWY 27 OR JOIN HOLDING PATTERN AT IAF FOLLOW ATC'S INSTRUCTIONS.
3. **DAKAM ONE ALPHA ARRIVAL (DAKAM 1A):** FM DAKAM AT FL120 OR ABOVE, ON TRACK 186°(R-006 PLK) TO PLK AT 2100M, CARRY OUT APPROACH PROCEDURE VOR Z RWY 09 OR VOR Z, ILS Z RWY 27 OR JOIN HOLDING PATTERN AT IAF FOLLOW ATC'S INSTRUCTIONS.
4. **TORUT ONE ALPHA ARRIVAL (TORUT 1A):** FM TORUT AT FL120 OR ABOVE, ON TRACK 198° (R-018 PLK) TO PLK AT 2100M, CARRY OUT APPROACH PROCEDURE VOR Z RWY 09 OR VOR Z, ILS Z RWY 27 OR JOIN HOLDING PATTERN AT IAF FOLLOW ATC'S INSTRUCTIONS.
5. **TALAP ONE ALPHA ARRIVAL (TALAP 1A):** FM TALAP AT FL100 OR ABOVE, ON TRACK 206° (R-026 PLK) TO PLK AT 2100M, CARRY OUT APPROACH PROCEDURE VOR Z RWY 09 OR VOR Z, ILS Z RWY 27 OR JOIN HOLDING PATTERN AT IAF FOLLOW ATC'S INSTRUCTIONS.



**DME REQUIRED**

PLEIKU  
DVOR/DME 113.4  
PLK  
14°00'22"N  
108°01'28"E

DAKAM  
14°27'23"N  
108°03'46"E

TORUT  
14°26'14"N  
108°09'47"E

TALAP  
14°24'54"N  
108°13'16"E

MADEN  
13°33'19"N  
108°03'28"E

GIALI  
13°34'11"N  
108°08'39"E

ELEV. ALT AND HGT IN METRES  
DIST IN KM  
BRG ARE MAG  
VAR 1°W

