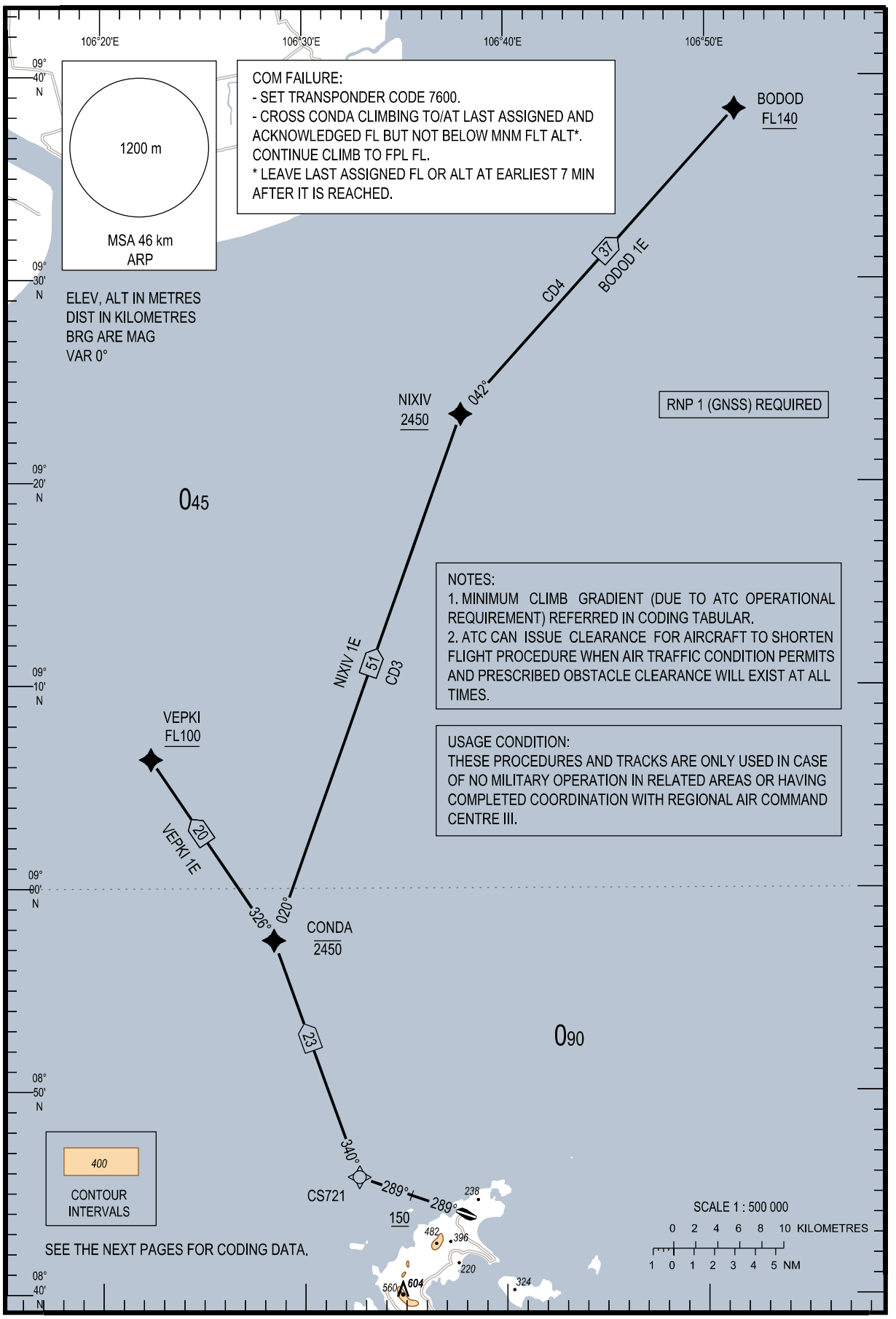
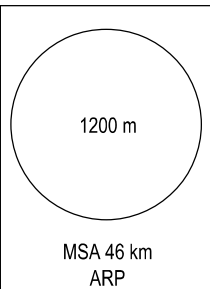


TRANSITION ALTITUDE
2750 m

TWR 118.15



COM FAILURE:
- SET TRANSPONDER CODE 7600.
- CROSS CONDA CLIMBING TO/AT LAST ASSIGNED AND ACKNOWLEDGED FL BUT NOT BELOW MNM FLT ALT*. CONTINUE CLIMB TO FPL FL.
* LEAVE LAST ASSIGNED FL OR ALT AT EARLIEST 7 MIN AFTER IT IS REACHED.

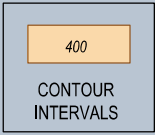


ELEV, ALT IN METRES
DIST IN KILOMETRES
BRG ARE MAG
VAR 0°

RNP 1 (GNSS) REQUIRED

NOTES:
1. MINIMUM CLIMB GRADIENT (DUE TO ATC OPERATIONAL REQUIREMENT) REFERRED IN CODING TABULAR.
2. ATC CAN ISSUE CLEARANCE FOR AIRCRAFT TO SHORTEN FLIGHT PROCEDURE WHEN AIR TRAFFIC CONDITION PERMITS AND PRESCRIBED OBSTACLE CLEARANCE WILL EXIST AT ALL TIMES.

USAGE CONDITION:
THESE PROCEDURES AND TRACKS ARE ONLY USED IN CASE OF NO MILITARY OPERATION IN RELATED AREAS OR HAVING COMPLETED COORDINATION WITH REGIONAL AIR COMMAND CENTRE III.



SEE THE NEXT PAGES FOR CODING DATA.

