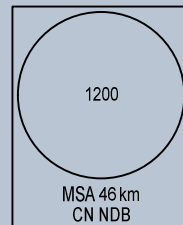


ELEV, ALT, HGT IN METRES  
DIST IN KILOMETRES  
BRG ARE MAG  
VAR 0°

106°30'E

106°45'E

NIXIV  
09°23'36"N  
106°38'02"E  
2150



045

NIXIV 1B  
43

RWY 29

1. NIXIV ONE BRAVO DEPARTURE (NIXIV 1B): MAINTAIN RWY HEADING, CLIMB TO 350 m, TURN RIGHT HEADING 060° (MAX IAS 400 km/h) TO INTERCEPT BRG 001° FM CN NDB TO VUSON, CONTINUE TO NIXIV AT 2150 m OR ABOVE. MINIMUM PDG 4.3% UNTIL 350 m.
2. VEPKI ONE BRAVO DEPARTURE (VEPKI 1B): MAINTAIN RWY HEADING, CLIMB TO 450 m, TURN RIGHT TO INTERCEPT BRG 326° FM CN NDB TO CONDA, CONTINUE TO VEPKI AT FL100 OR ABOVE. MINIMUM CLIMB GRADIENT 5.8% UNTIL FL100 DUE TO OPERATIONAL REQUIREMENT.

VEPKI  
09°06'21"N  
106°22'25"E  
FL100

VEPKI 1B  
20

VUSON  
09°00'15"N  
106°37'44"E

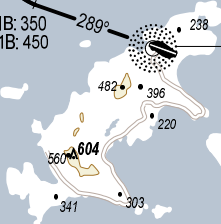
CONDA  
08°57'26"N  
106°28'29"E

BRG 326°  
FM CN

BRG 060°  
FM CN

NIXIV 1B: 350  
VEPKI 1B: 450

CONSON  
NDB 375  
CN 2:--  
08°43'58"N  
106°37'35"E



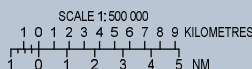
090

9° 15' N

9° 00' N

8° 45' N

8° 30' N



400  
CONTOUR  
INTERVALS