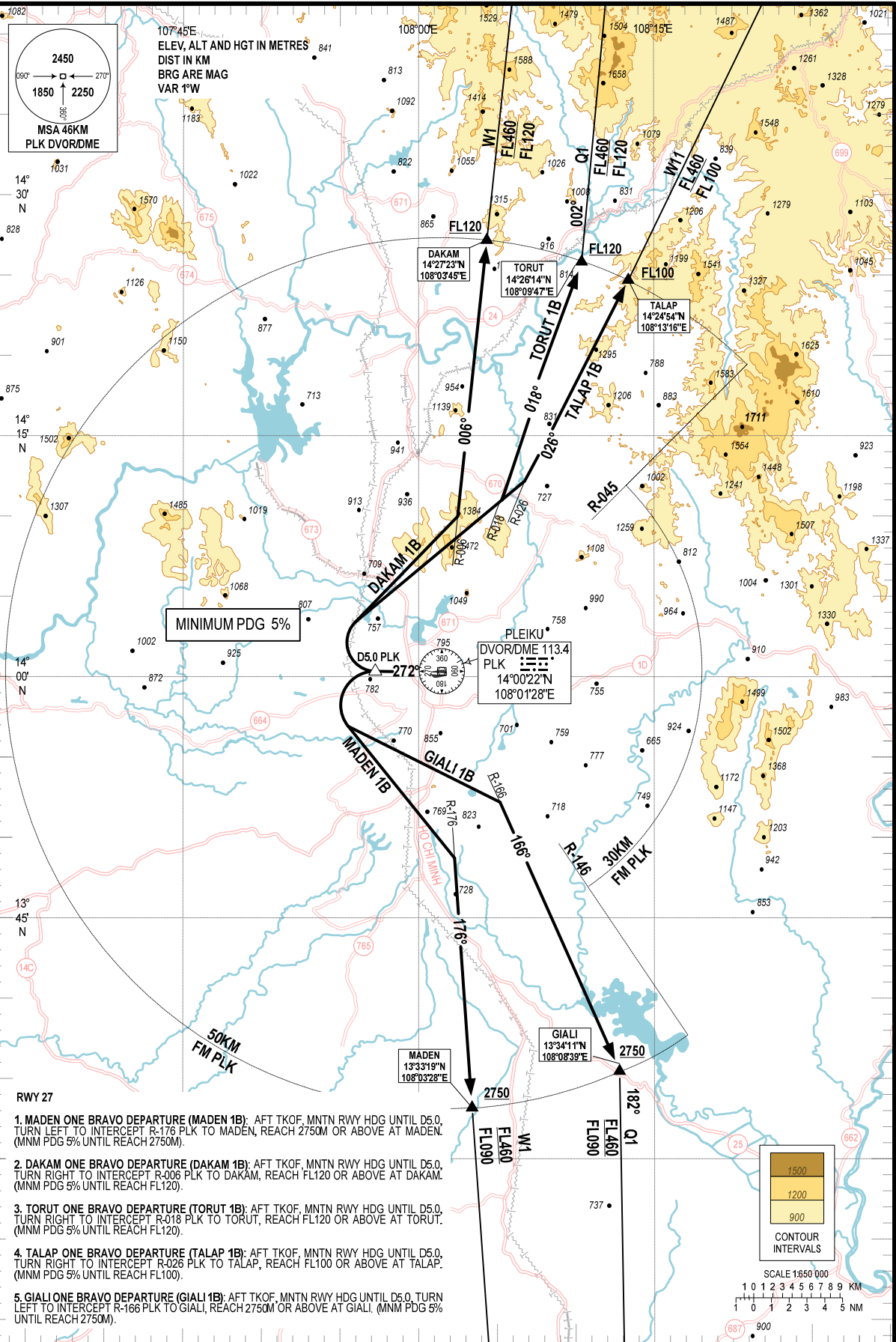


ELEV, ALT AND HGT IN METRES  
DIST IN KM  
BRG ARE MAG  
VAR 1°W



RWY 27

- 1. MADEN ONE BRAVO DEPARTURE (MADEN 1B):** AFT TKOF, MNTN RWY HDG UNTIL D5.0, TURN LEFT TO INTERCEPT R-176 PLK TO MADEN, REACH 2750M OR ABOVE AT MADEN. (MNM PDG 5% UNTIL REACH 2750M).
- 2. DAKAM ONE BRAVO DEPARTURE (DAKAM 1B):** AFT TKOF, MNTN RWY HDG UNTIL D5.0, TURN RIGHT TO INTERCEPT R-006 PLK TO DAKAM, REACH FL120 OR ABOVE AT DAKAM. (MNM PDG 5% UNTIL REACH FL120).
- 3. TORUT ONE BRAVO DEPARTURE (TORUT 1B):** AFT TKOF, MNTN RWY HDG UNTIL D5.0, TURN RIGHT TO INTERCEPT R-018 PLK TO TORUT, REACH FL120 OR ABOVE AT TORUT. (MNM PDG 5% UNTIL REACH FL120).
- 4. TALAP ONE BRAVO DEPARTURE (TALAP 1B):** AFT TKOF, MNTN RWY HDG UNTIL D5.0, TURN RIGHT TO INTERCEPT R-026 PLK TO TALAP, REACH FL100 OR ABOVE AT TALAP. (MNM PDG 5% UNTIL REACH FL100).
- 5. GIALI ONE BRAVO DEPARTURE (GIALI 1B):** AFT TKOF, MNTN RWY HDG UNTIL D5.0, TURN LEFT TO INTERCEPT R-166 PLK TO GIALI, REACH 2750M OR ABOVE AT GIALI. (MNM PDG 5% UNTIL REACH 2750M).

