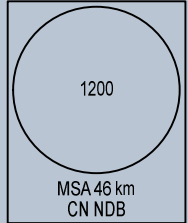


108°30'E

106°45'E

ELEV, ALT, HGT IN METRES
DIST IN KILOMETRES
BRG ARE MAG
VAR 0°

NIXIV
09°23'36"N
106°38'02"E
2150



045

RWY 11

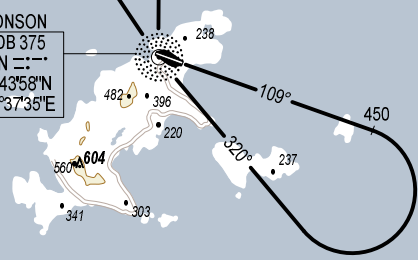
1. NIXIV ONE ALPHA DEPARTURE (NIXIV 1A): MAINTAIN RWY HEADING, CLIMB TO 450 m, TURN RIGHT TO INTERCEPT BRG 320° TO CN NDB, INTERCEPT BRG 001° FM CN NDB TO VUSON, CONTINUE TO NIXIV AT 2150 m OR ABOVE.
2. VEPKI ONE ALPHA DEPARTURE (VEPKI 1A): MAINTAIN RWY HEADING, CLIMB TO 450 M, TURN RIGHT TO INTERCEPT BRG 320° TO CN NDB, INTERCEPT BRG 326° FM CN NDB TO CONDA, CONTINUE TO VEPKI AT FL100 OR ABOVE.

VEPKI
09°06'21"N
106°22'25"E
FL100

VUSON
09°00'15"N
106°37'44"E

CONDA
08°57'26"N
106°28'29"E

CONSON
NDB 375
CN ---
08°43'58"N
106°37'35"E



090

