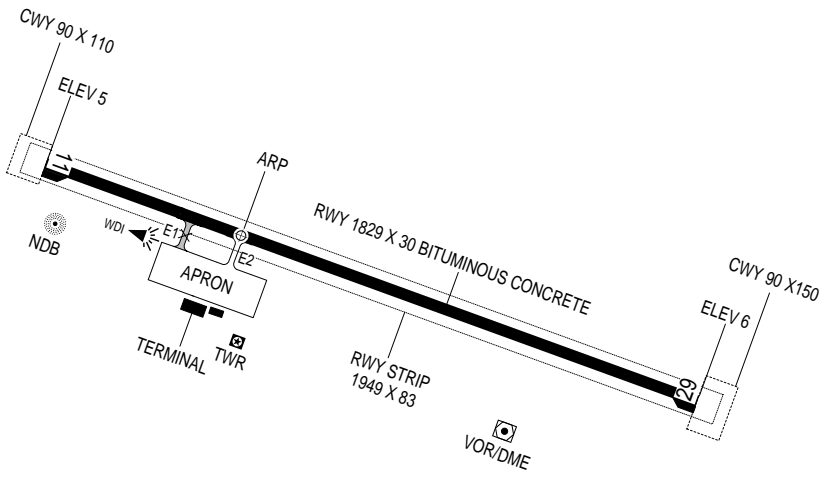


RWY	DIRECTION (TRUE)	THR WGS-84	BEARING STRENGTH
11	109°	08°44'05"N 106°37'29E	PCN 20/F/B/W/T
29	289°	08°43'45"N 106°38'26"E	

ELEVATIONS AND DIMENSIONS IN METRES

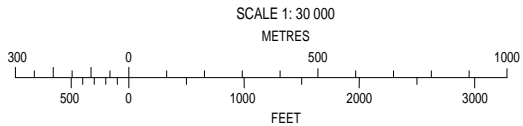
TAXIWAYS WIDTH: 15M

N
VAR 0° 2019

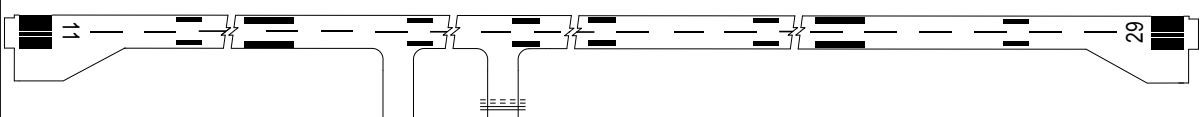


LEGEND	
BUILDINGS	■
WIND DIRECTION INDICATOR (WDI)	↙
RWY-HOLDING POSITION	≡≡≡≡
CLOSED AREA	⊗
ARP	⊕

LIGHTING AIDS CLEARWAY AND STOPWAY RWY 11/29 (TO BE DEVELOPED)



MARKING AIDS RWY 11/29 AND EXIT TWY



LIGHTING AIDS RWY 11/29 AND EXIT TWY (TO BE DEVELOPED)