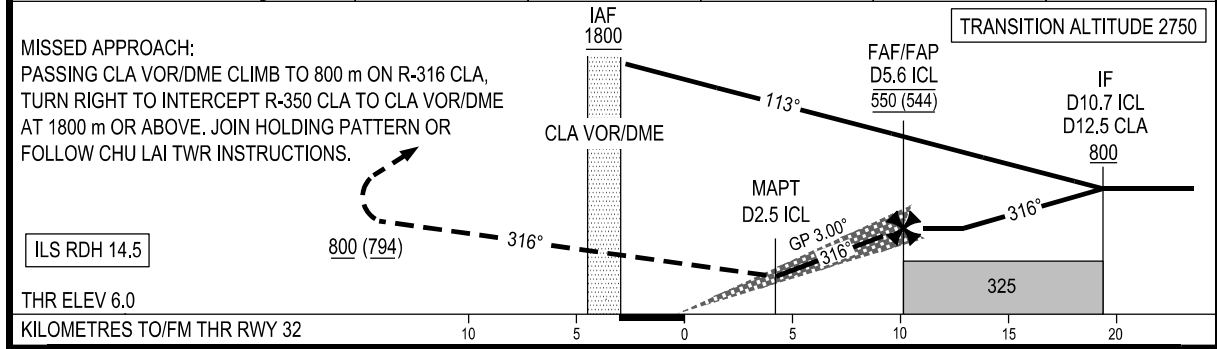


DME DIST	ICL	2.5	3	4	5	5.6
ALTITUDE (3.00°)		245	295	390	490	550



OCA (H)		C	D
STRAIGHT-IN APPROACH	CAT I	90 (84)	93 (87)
	GP INOP	245 (237)	
CIRCLING		420 (412)	

GS	km/h	150	200	250	300
FAF-MAPT 5.8 km	min:s	2:20	1:45	1:24	1:10
RATE OF DESCENT (3.00°)	m/s	2.2	2.9	3.6	4.4

CIRCLING IS ONLY IN THE NORTH EAST OF RWY.