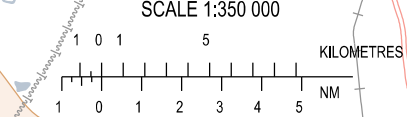
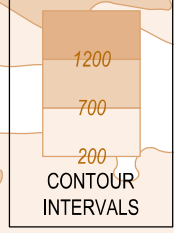


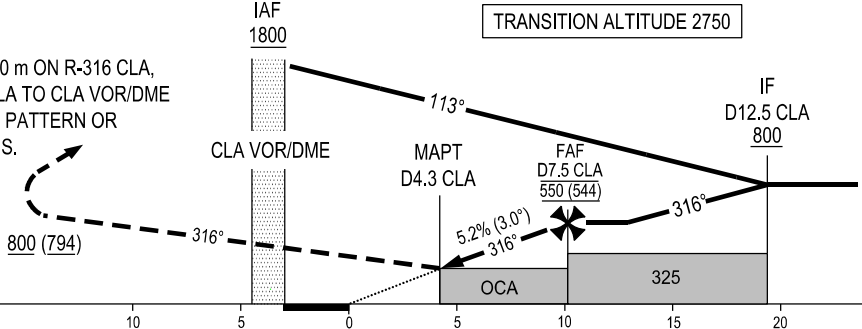
USAGE CONDITION: THIS PROCEDURE IS ONLY USED IN CASE OF NO MILITARY FLIGHT OPERATION IN RELATED AREAS OR HAVING COMPLETED COORDINATION BETWEEN CIVIL AVIATION AND MILITARY.

DME REQUIRED



DME DIST	CLA	4.3	5	6	7	7.5
ALTITUDE (5.2%)		245	310	405	505	550

MISSED APPROACH:
PASSING CLA VOR/DME CLIMB TO 800 m ON R-316 CLA,
TURN RIGHT TO INTERCEPT R-010 CLA TO CLA VOR/DME
AT 1800 m OR ABOVE. JOIN HOLDING PATTERN OR
FOLLOW CHU LAI TWR INSTRUCTIONS.



THR ELEV 6
KILOMETRES TO/FM THR RWY 32

OCA (H)	C	D
STRAIGHT-IN APPROACH	245 (237)	
CIRCLING	420 (412)	

GS	km/h	150	200	250	300
FAF-MAPT 5.8 km	min:s	2:20	1:45	1:24	1:10
RATE OF DESCENT 5.2% (3.0°)	m/s	2.2	2.9	3.6	4.4

CIRCLING IS ONLY IN THE NORTH EAST OF RWY.