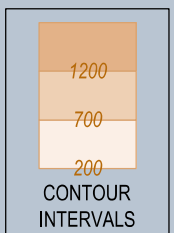
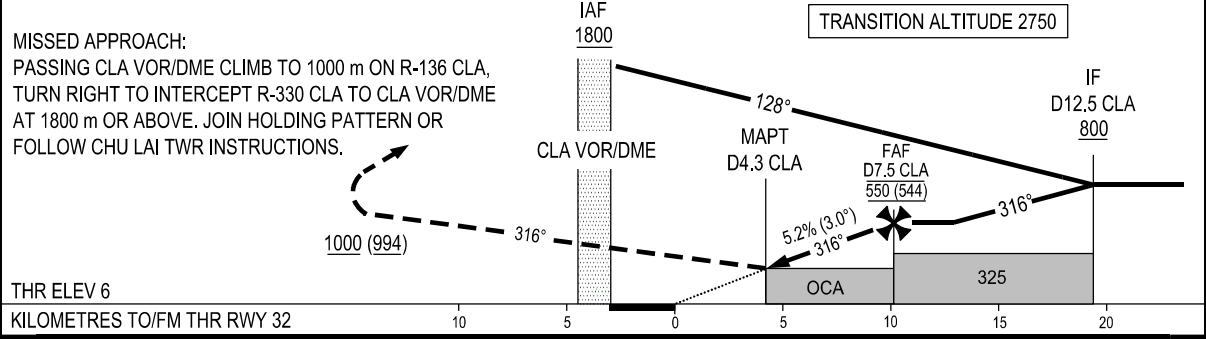


DME REQUIRED



DME DIST	CLA	4.3	5	6	7	7.5
ALTITUDE (5.2%)		245	310	405	505	550



OCA (H)	A	B
STRAIGHT-IN APPROACH	245 (237)	
CIRCLING	325 (317)	

GS	km/h	150	200	250	300
FAF-MAPT 5.8 km	min:s	2:20	1:45	1:24	1:10
RATE OF DESCENT 5.2% (3.0°)	m/s	2.2	2.9	3.6	4.4

CIRCLING IS ONLY IN THE NORTH EAST OF RWY.