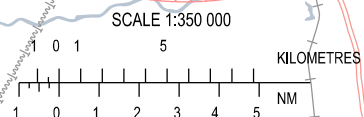
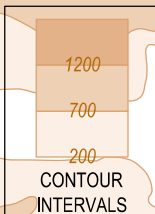


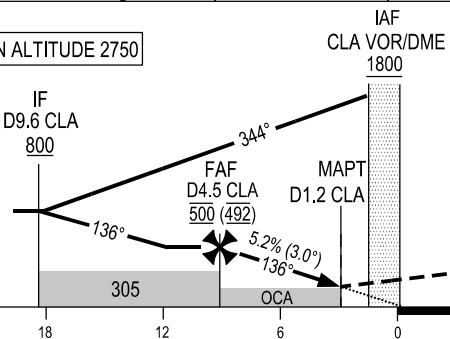
**USAGE CONDITION:** THIS PROCEDURE IS ONLY USED IN CASE OF NO MILITARY FLIGHT OPERATION IN RELATED AREAS OR HAVING COMPLETED COORDINATION BETWEEN CIVIL AVIATION AND MILITARY.

**DME REQUIRED**



DME DIST	CLA	1.2	2	3	4	4.5
ALTITUDE (5.2%)		175	255	350	450	500

**TRANSITION ALTITUDE 2750**



**MISSED APPROACH:**  
PASSING CLA VOR/DME CLIMB TO 800 m ON R-136 CLA, TURN LEFT TO INTERCEPT R-100 CLA TO CLA VOR/DME AT 1800 m OR ABOVE. JOIN HOLDING PATTERN OR FOLLOW CHU LAI TWR INSTRUCTIONS.

THR ELEV 8

OCA (H)	C	D
STRAIGHT-IN APPROACH	175 (167)	
CIRCLING	420 (412)	

GS	km/h	150	200	250	300
FAF-MAPT 6.2 km	min:s	2:29	1:52	1:29	1:14
RATE OF DESCENT 5.2% (3.0°)	m/s	2.2	2.9	3.6	4.4

CIRCLING IS ONLY IN THE NORTH EAST OF RWY