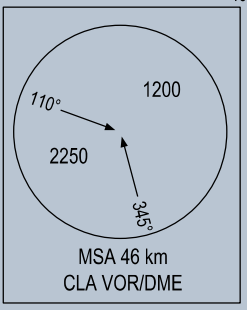
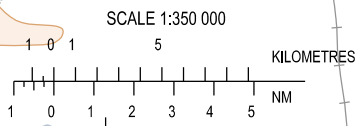
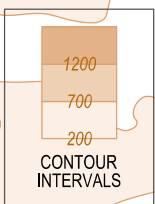


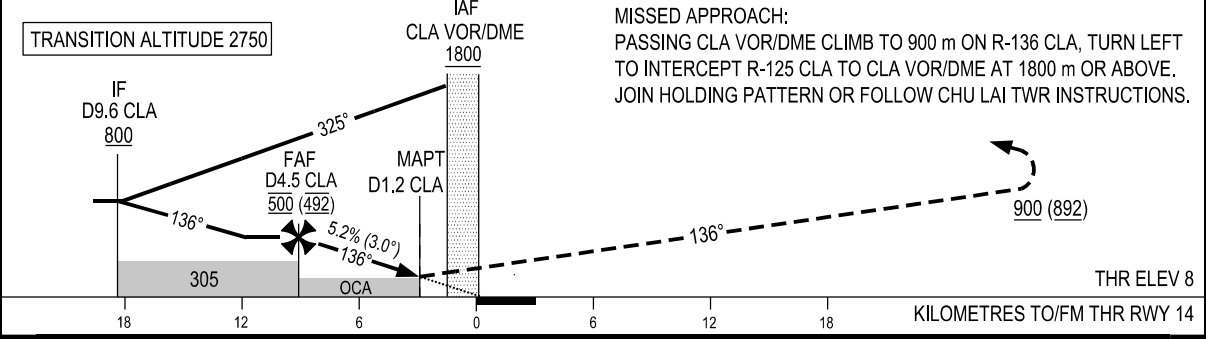
**USAGE CONDITION: THIS PROCEDURE IS ONLY USED IN CASE OF NO MILITARY FLIGHT OPERATION IN RELATED AREAS OR HAVING COMPLETED COORDINATION BETWEEN CIVIL AVIATION AND MILITARY.**



**DME REQUIRED**



DME DIST	CLA	1.2	2	3	4	4.5
ALTITUDE (5.2%)		175	255	350	450	500



**MISSED APPROACH:**  
PASSING CLA VOR/DME CLIMB TO 900 m ON R-136 CLA, TURN LEFT TO INTERCEPT R-125 CLA TO CLA VOR/DME AT 1800 m OR ABOVE. JOIN HOLDING PATTERN OR FOLLOW CHU LAI TWR INSTRUCTIONS.

OCA (H)	A	B
STRAIGHT-IN APPROACH	175 (167)	
CIRCLING	325 (317)	

GS	km/h	150	200	250	300
FAF-MAPT 6.2 km	min:s	2:29	1:52	1:29	1:14
RATE OF DESCENT 5.2% (3.0°)	m/s	2.2	2.9	3.6	4.4

**CIRCLING IS ONLY IN THE NORTH EAST OF RWY**