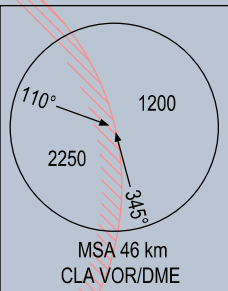
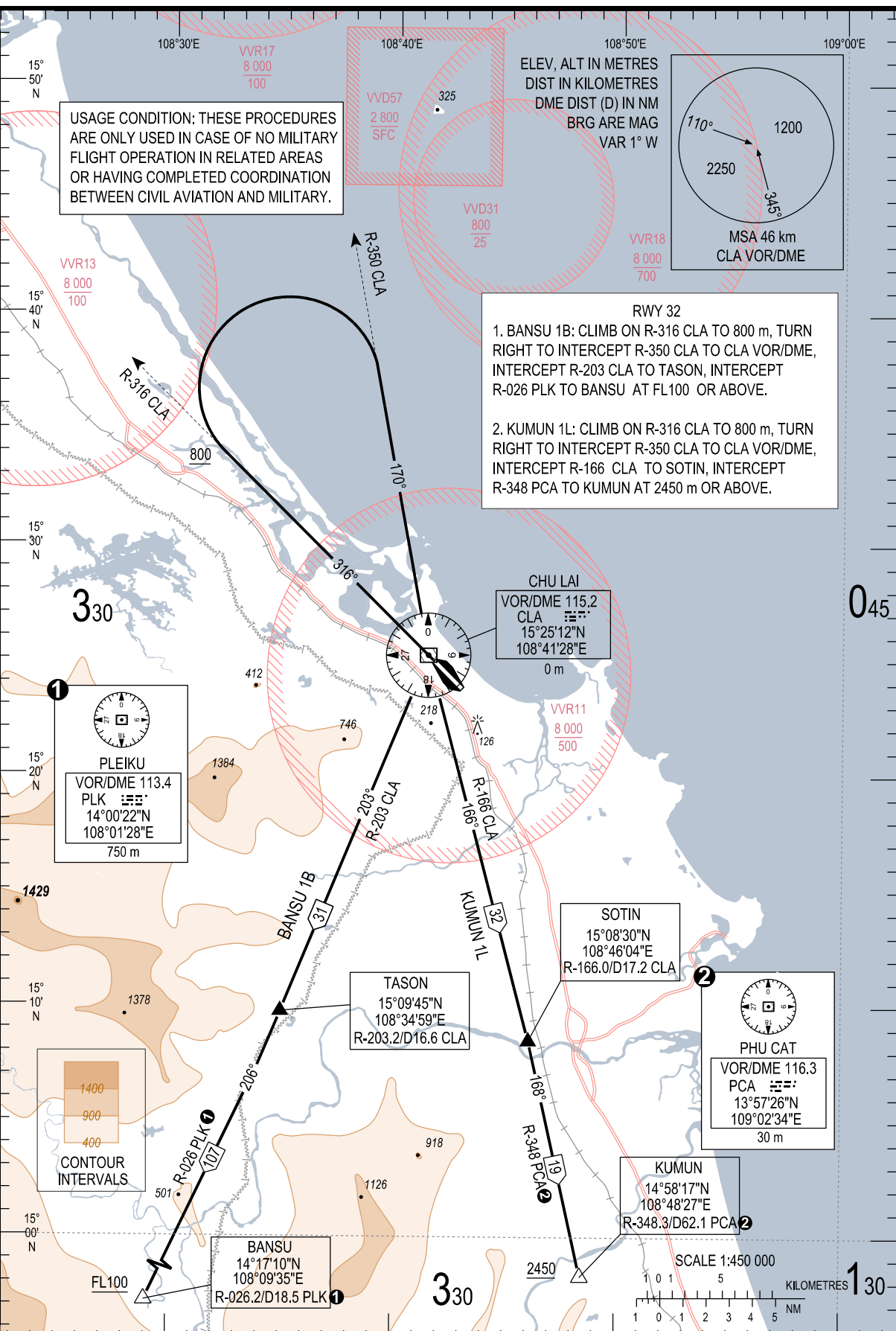


USAGE CONDITION: THESE PROCEDURES ARE ONLY USED IN CASE OF NO MILITARY FLIGHT OPERATION IN RELATED AREAS OR HAVING COMPLETED COORDINATION BETWEEN CIVIL AVIATION AND MILITARY.

ELEV, ALT IN METRES
DIST IN KILOMETRES
DME DIST (D) IN NM
BRG ARE MAG
VAR 1° W



- RWY 32**
1. BANSU 1B: CLIMB ON R-316 CLA TO 800 m, TURN RIGHT TO INTERCEPT R-350 CLA TO CLA VOR/DME, INTERCEPT R-203 CLA TO TASON, INTERCEPT R-026 PLK TO BANSU AT FL100 OR ABOVE.
 2. KUMUN 1L: CLIMB ON R-316 CLA TO 800 m, TURN RIGHT TO INTERCEPT R-350 CLA TO CLA VOR/DME, INTERCEPT R-166 CLA TO SOTIN, INTERCEPT R-348 PCA TO KUMUN AT 2450 m OR ABOVE.



1

PLEIKU
VOR/DME 113.4
PLK
14°00'22"N
108°01'28"E
750 m

CHU LAI
VOR/DME 115.2
CLA
15°25'12"N
108°41'28"E
0 m

2

SOTIN
15°08'30"N
108°46'04"E
R-166.0/D17.2 CLA

2

PHU CAT
VOR/DME 116.3
PCA
13°57'26"N
109°02'34"E
30 m

2

KUMUN
14°58'17"N
108°48'27"E
R-348.3/D62.1 PCA

1

BANSU
14°17'10"N
108°09'35"E
R-026.2/D18.5 PLK

