

**STANDARD ARRIVAL CHART
- INSTRUMENT (STAR) - ICAO**

TRANSITION ALTITUDE
2750

TWR: 118.6

**BINH DINH/PHU CAT DOM (VVPC)
RWY 33
KUMUN 1J, KAMGO 1J, NOBID 1R**

108°40'E 108°50'E 109°00'E 109°10'E 109°20'E 109°30'E

14° 30' N
14° 20' N
14° 10' N
14° 00' N
13° 50' N
13° 40' N
13° 30' N
13° 20' N

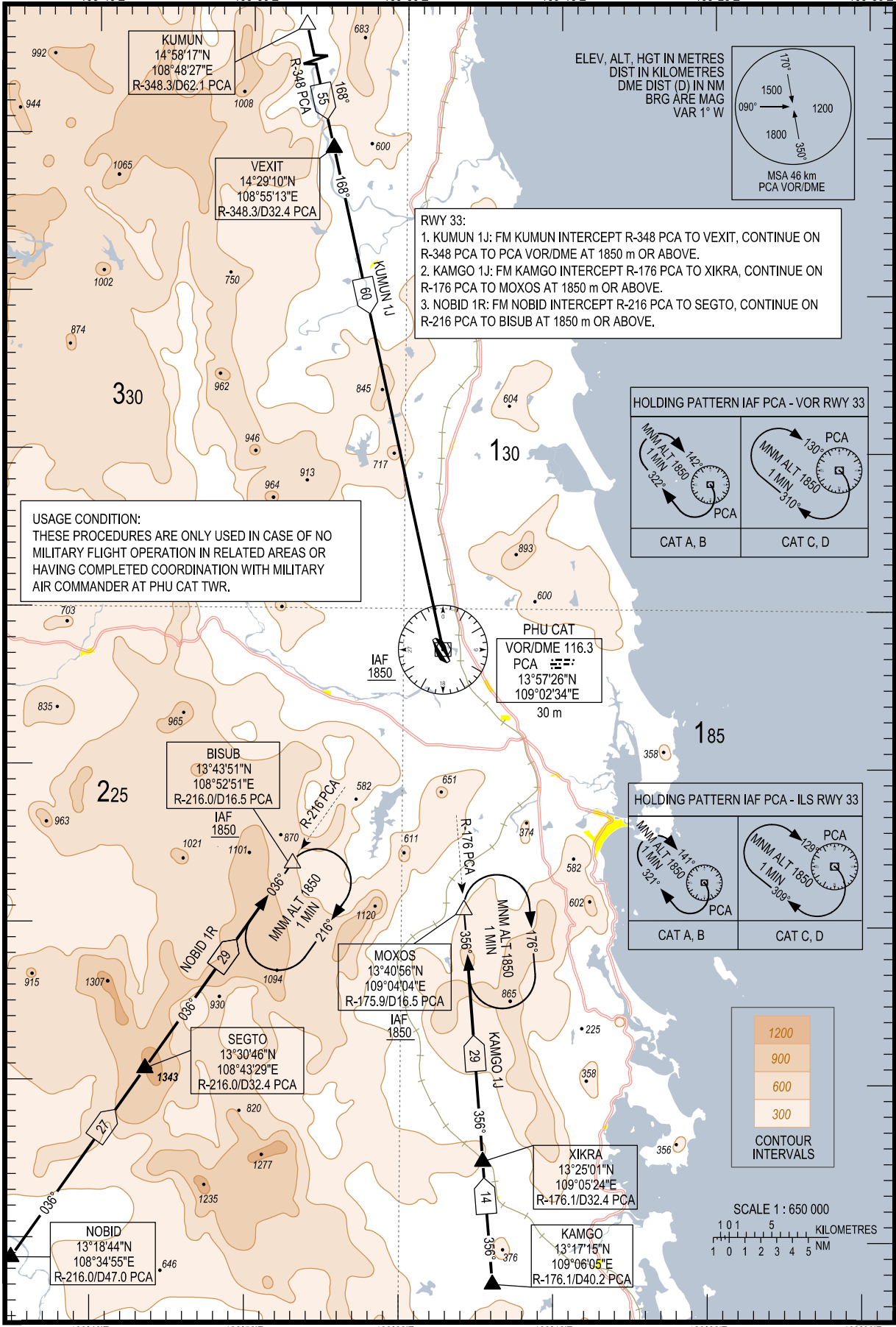
14° 30' N
14° 20' N
14° 10' N
14° 00' N
13° 50' N
13° 40' N
13° 30' N
13° 20' N

14° 00' N
13° 50' N
13° 40' N
13° 30' N
13° 20' N

14° 00' N
13° 50' N
13° 40' N
13° 30' N
13° 20' N

13° 30' N
13° 20' N

13° 30' N
13° 20' N

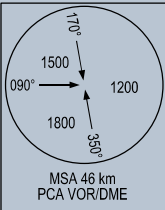


KUMUN
14°58'17"N
108°48'27"E
R-348.3/D62.1 PCA

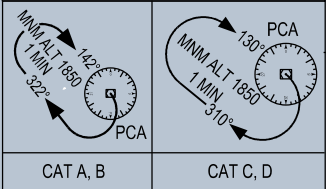
VEXIT
14°29'10"N
108°55'13"E
R-348.3/D32.4 PCA

RWY 33:
1. KUMUN 1J: FM KUMUN INTERCEPT R-348 PCA TO VEXIT, CONTINUE ON R-348 PCA TO PCA VOR/DME AT 1850 m OR ABOVE.
2. KAMGO 1J: FM KAMGO INTERCEPT R-176 PCA TO XIKRA, CONTINUE ON R-176 PCA TO MOXOS AT 1850 m OR ABOVE.
3. NOBID 1R: FM NOBID INTERCEPT R-216 PCA TO SEGTO, CONTINUE ON R-216 PCA TO BISUB AT 1850 m OR ABOVE.

ELEV, ALT, HGT IN METRES
DIST IN KILOMETRES
DME DIST (D) IN NM
BRG ARE MAG
VAR 1° W



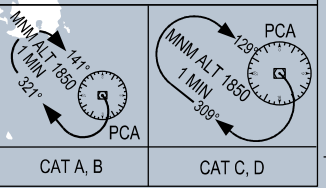
HOLDING PATTERN IAF PCA - VOR RWY 33



USAGE CONDITION:
THESE PROCEDURES ARE ONLY USED IN CASE OF NO MILITARY FLIGHT OPERATION IN RELATED AREAS OR HAVING COMPLETED COORDINATION WITH MILITARY AIR COMMANDER AT PHU CAT TWR.

PHU CAT
VOR/DME 116.3
PCA
13°57'26"N
109°02'34"E
30 m

HOLDING PATTERN IAF PCA - ILS RWY 33



BISUB
13°43'51"N
108°52'51"E
R-216.0/D16.5 PCA

MOXOS
13°40'56"N
109°04'04"E
R-175.9/D16.5 PCA

SEGTO
13°30'46"N
108°43'29"E
R-216.0/D32.4 PCA

XIKRA
13°25'01"N
109°05'24"E
R-176.1/D32.4 PCA

NOBID
13°18'44"N
108°34'55"E
R-216.0/D47.0 PCA

KAMGO
13°17'15"N
109°06'08"E
R-176.1/D40.2 PCA

