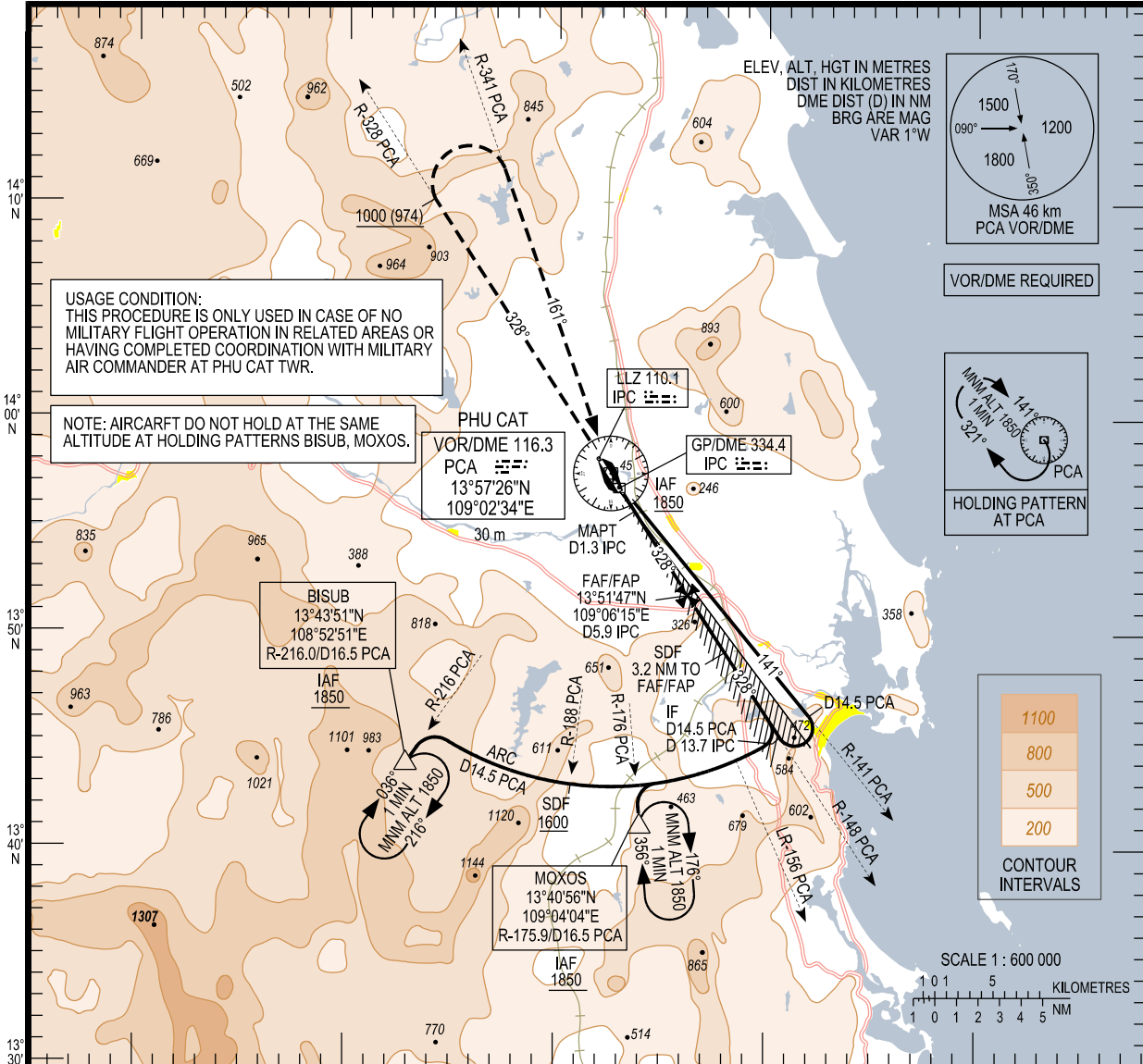
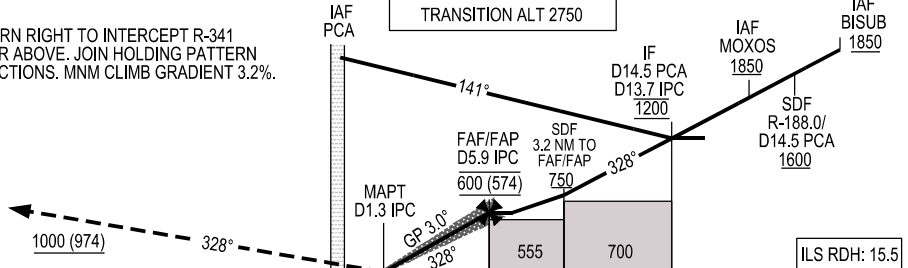


108°40'E 108°50'E 109°00'E 109°10'E 109°20'E



DME DISTANCE	IPC	1.3	2	3	4	5	5.9
ALTITUDE (3.0°)		160	220	320	415	510	600

MISSED APPROACH:
CLIMB ON R-328 PCA TO 1000 m, TURN RIGHT TO INTERCEPT R-341 PCA TO PCA VOR/DME AT 1850 m OR ABOVE. JOIN HOLDING PATTERN OR FOLLOW PHU CAT TWR INSTRUCTIONS. MNM CLIMB GRADIENT 3.2%.



KILOMETRES TO/FM THR RWY 33

OCA (H)		A	B
STRAIGHT-IN APPROACH	CAT I	109 (83)	112 (86)
	GP INOP	160 (134)	
CIRCLING		300 (270)	

GS	km/h	150	200	250	300
FAF-MAPT 8.5 km	min:s	3:25	2:34	2:03	1:42
RATE OF DESCENT 5.2% (3°)	m/s	2.2	2.9	3.6	4.4