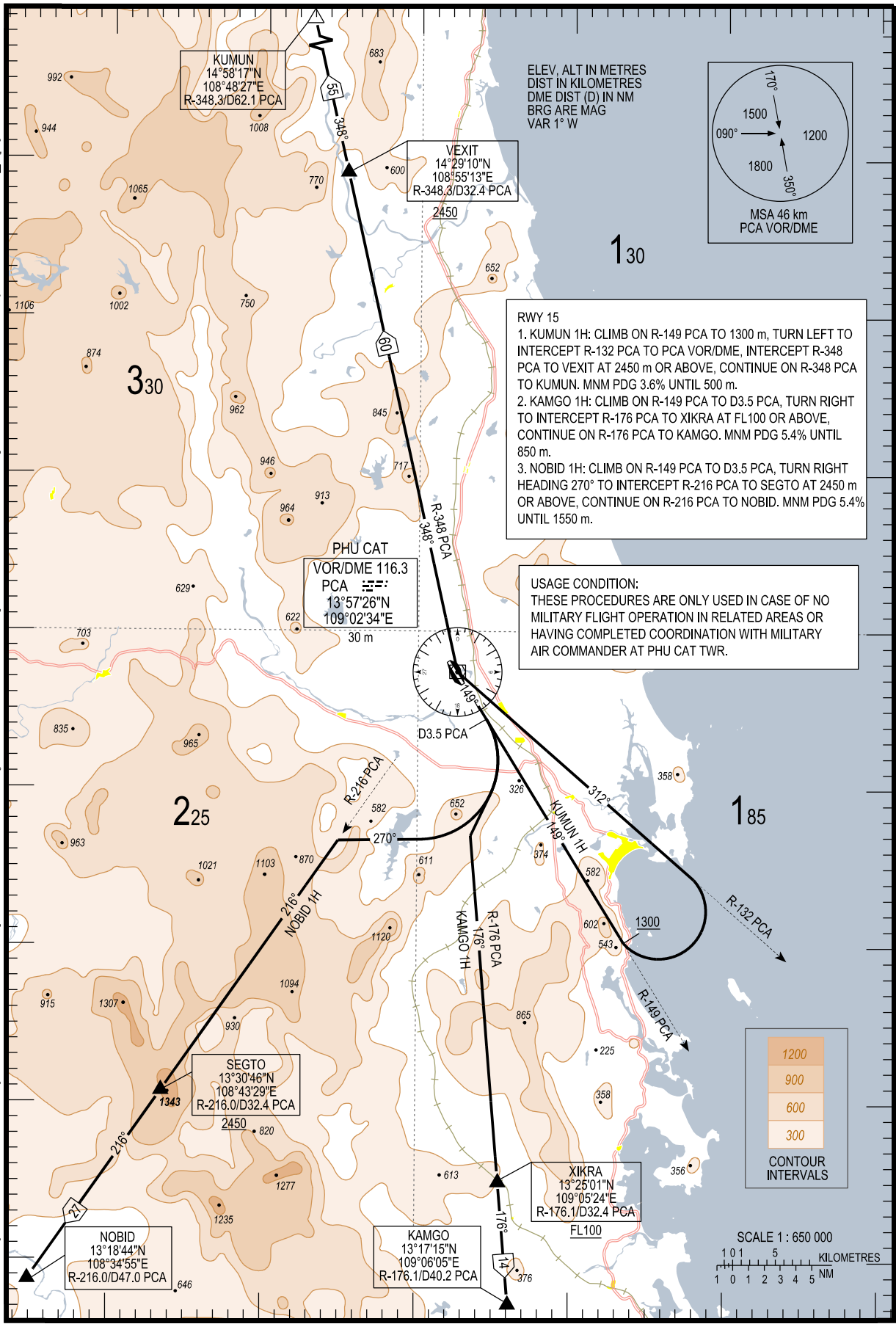
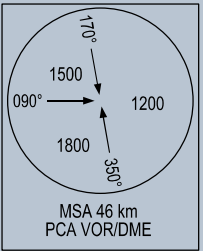


108°40'E 108°50'E 109°00'E 109°10'E 109°20'E 109°30'E

14°30'N  
14°20'N  
14°10'N  
14°00'N  
13°50'N  
13°40'N  
13°30'N  
13°20'N



ELEV. ALT IN METRES  
DME DIST (D) IN NM  
BRG ARE MAG  
VAR 1° W



- RWY 15
1. KUMUN 1H: CLIMB ON R-149 PCA TO 1300 m, TURN LEFT TO INTERCEPT R-132 PCA TO PCA VOR/DME, INTERCEPT R-348 PCA TO VEXIT AT 2450 m OR ABOVE, CONTINUE ON R-348 PCA TO KUMUN. MNM PDG 3.6% UNTIL 500 m.
  2. KAMGO 1H: CLIMB ON R-149 PCA TO D3.5 PCA, TURN RIGHT TO INTERCEPT R-176 PCA TO XIKRA AT FL100 OR ABOVE, CONTINUE ON R-176 PCA TO KAMGO. MNM PDG 5.4% UNTIL 850 m.
  3. NOBID 1H: CLIMB ON R-149 PCA TO D3.5 PCA, TURN RIGHT HEADING 270° TO INTERCEPT R-216 PCA TO SEGTO AT 2450 m OR ABOVE, CONTINUE ON R-216 PCA TO NOBID. MNM PDG 5.4% UNTIL 1550 m.

USAGE CONDITION:  
THESE PROCEDURES ARE ONLY USED IN CASE OF NO MILITARY FLIGHT OPERATION IN RELATED AREAS OR HAVING COMPLETED COORDINATION WITH MILITARY AIR COMMANDER AT PHU CAT TWR.

