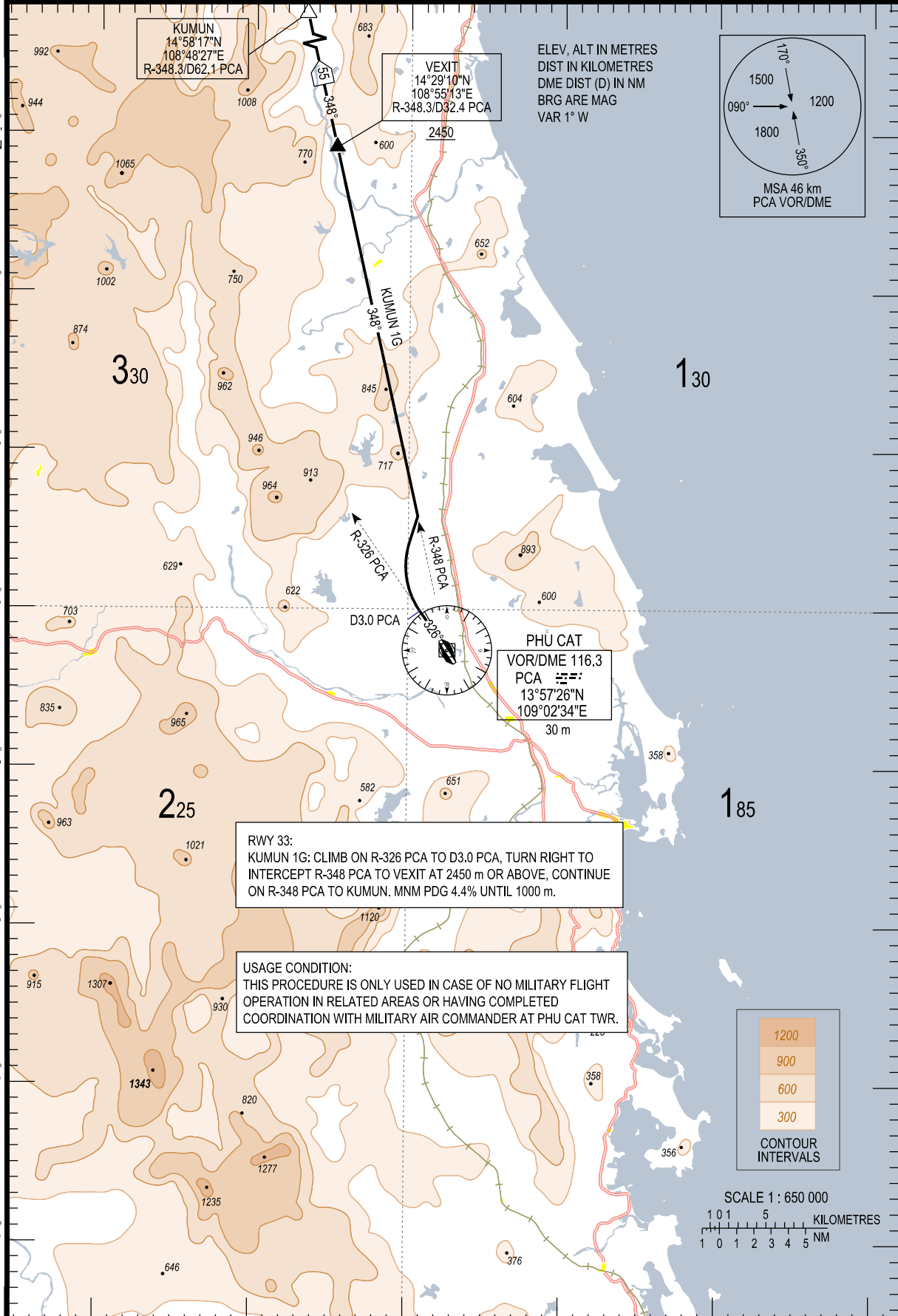


108°40'E 108°50'E 109°00'E 109°10'E 109°20'E 109°30'E

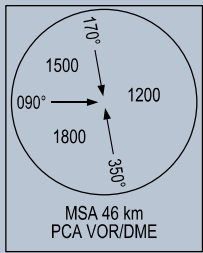
14°30'N
14°20'N
14°10'N
14°00'N
13°50'N
13°40'N
13°30'N
13°20'N



KUMUN
14°58'17"N
108°48'27"E
R-348.3/D62.1 PCA

VEXIT
14°29'10"N
108°55'13"E
R-348.3/D32.4 PCA

ELEV, ALT IN METRES
DIST IN KILOMETRES
DME DIST (D) IN NM
BRG ARE MAG
VAR 1° W



PHU CAT
VOR/DME 116.3
PCA
13°57'26"N
109°02'34"E
30 m

RWY 33:
KUMUN 1G: CLIMB ON R-326 PCA TO D3.0 PCA, TURN RIGHT TO INTERCEPT R-348 PCA TO VEXIT AT 2450 m OR ABOVE, CONTINUE ON R-348 PCA TO KUMUN. MNM PDG 4.4% UNTIL 1000 m.

USAGE CONDITION:
THIS PROCEDURE IS ONLY USED IN CASE OF NO MILITARY FLIGHT OPERATION IN RELATED AREAS OR HAVING COMPLETED COORDINATION WITH MILITARY AIR COMMANDER AT PHU CAT TWR.

