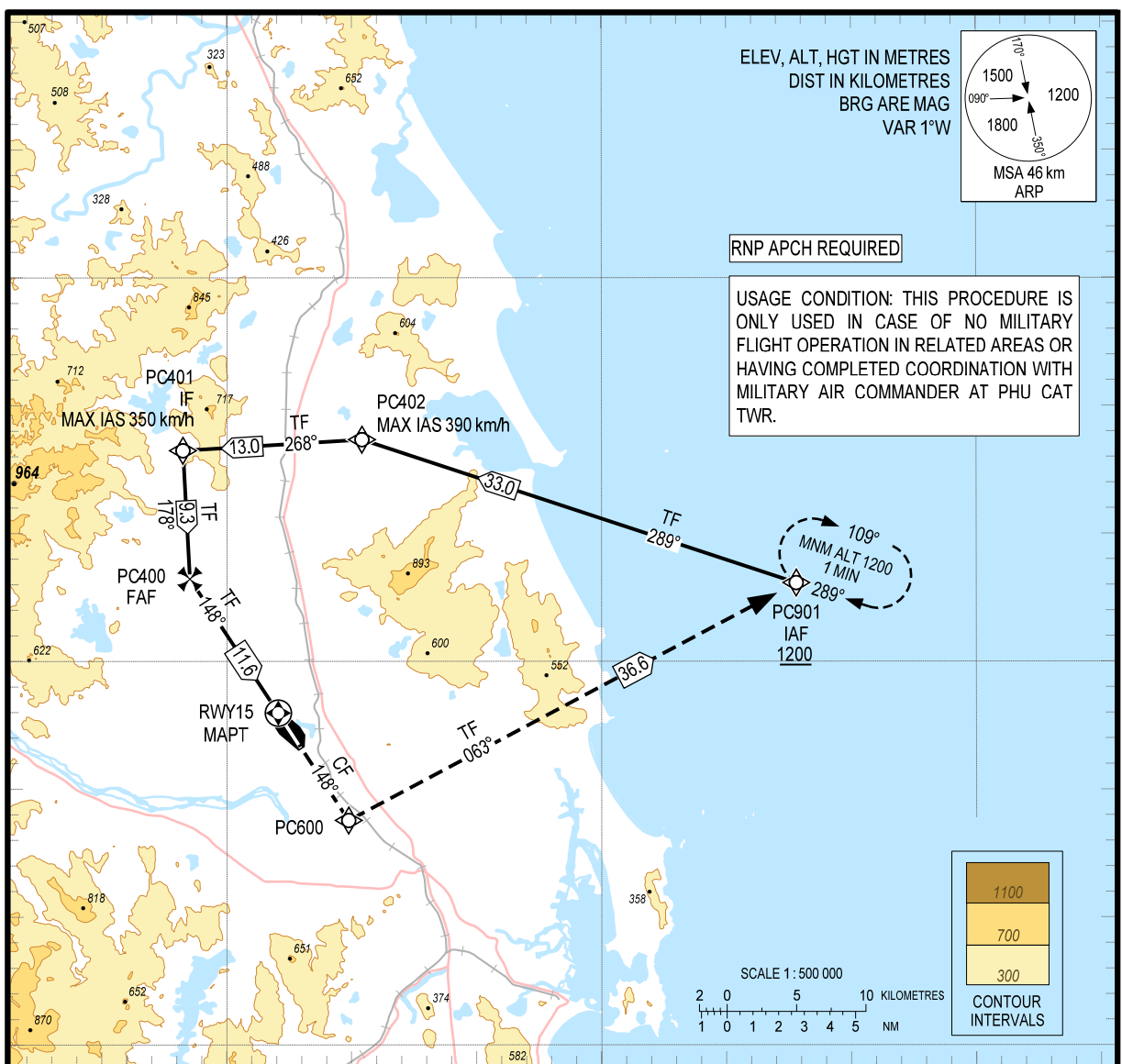
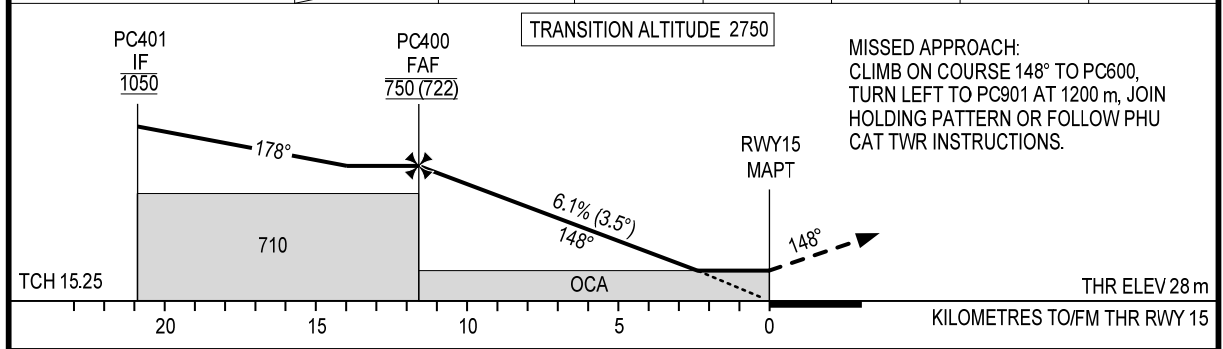


109°00'E 109°15'E 109°30'E

14° 15' N  
14° 00' N  
13° 45' N



KILOMETRES TO NEXT WPT	RWY15	2	4	6	8	10	11.6
ALT		165	285	410	530	655	750



**MISSED APPROACH:**  
CLIMB ON COURSE 148° TO PC600,  
TURN LEFT TO PC901 AT 1200 m, JOIN  
HOLDING PATTERN OR FOLLOW PHU  
CAT TWR INSTRUCTIONS.

OCA (H)	A	B	C	D
LNAV	200 (172)			
CIRCLING	NOT APPLICABLE			

GS	km/h	150	200	250	300
RATE OF DESCENT	m/s	2.5	3.4	4.2	5.1
FAF - MAPT 11.6 km	min:s	4:38	3:29	2:47	2:19