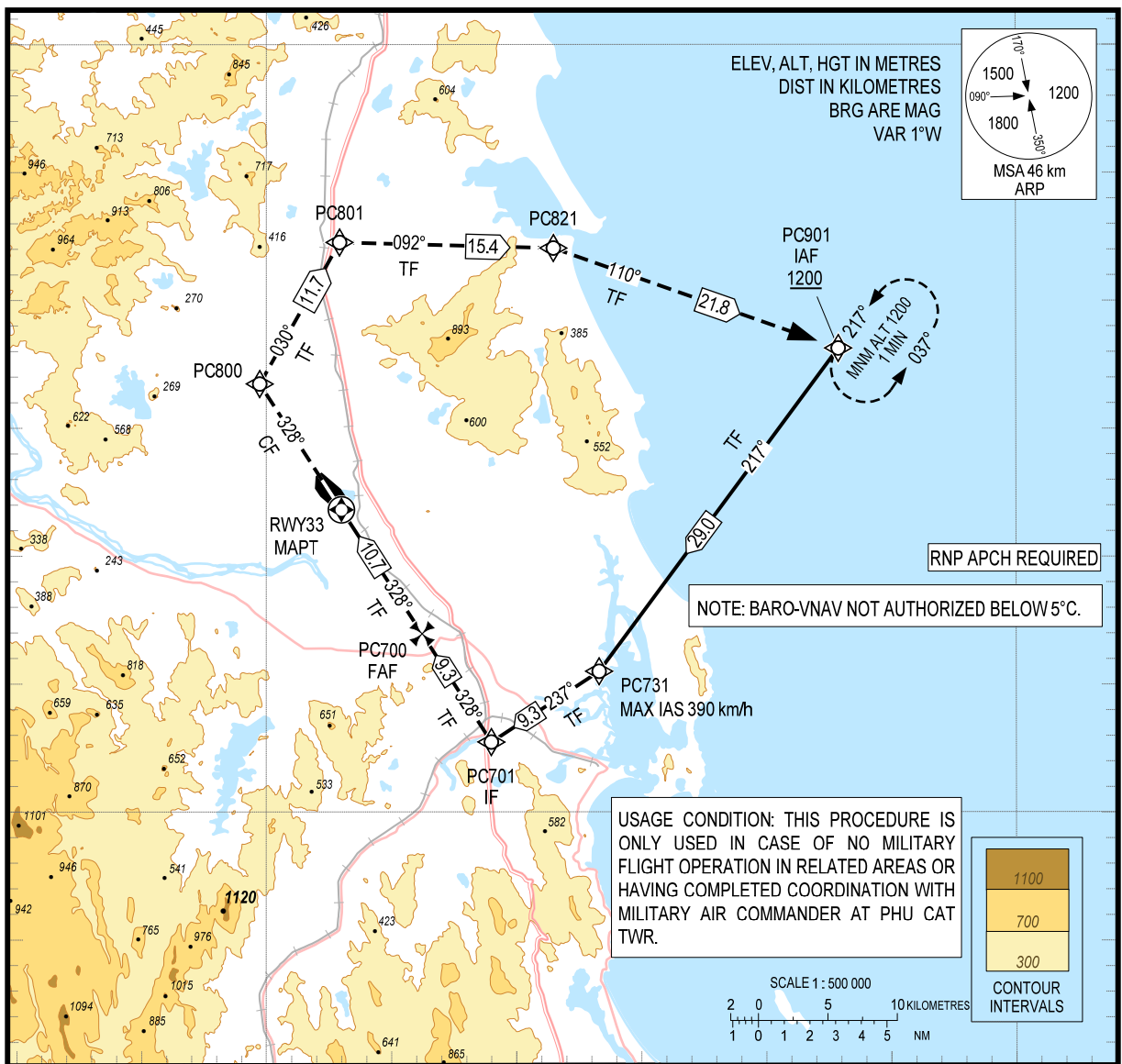


109°00'E

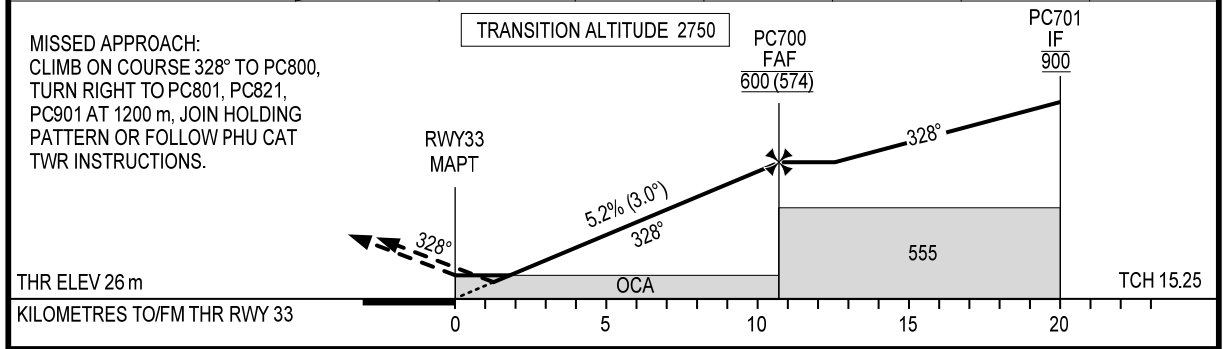
109°30'E

14°
15'
N

14°
15'
N



KILOMETRES TO NEXT WPT	RWY33	2	4	6	8	10	10.7
ALT		145	250	360	460	565	600



OCA (H)	A	B	C	D
LNAV/VNAV	140 (114)			
LNAV	160 (134)			
CIRCLING	NOT APPLICABLE			

GS	km/h	150	200	250	300
RATE OF DESCENT	m/s	2.2	2.9	3.6	4.4
FAF - MAPT 10.7 km	min:s	4:17	3:13	2:34	2:08