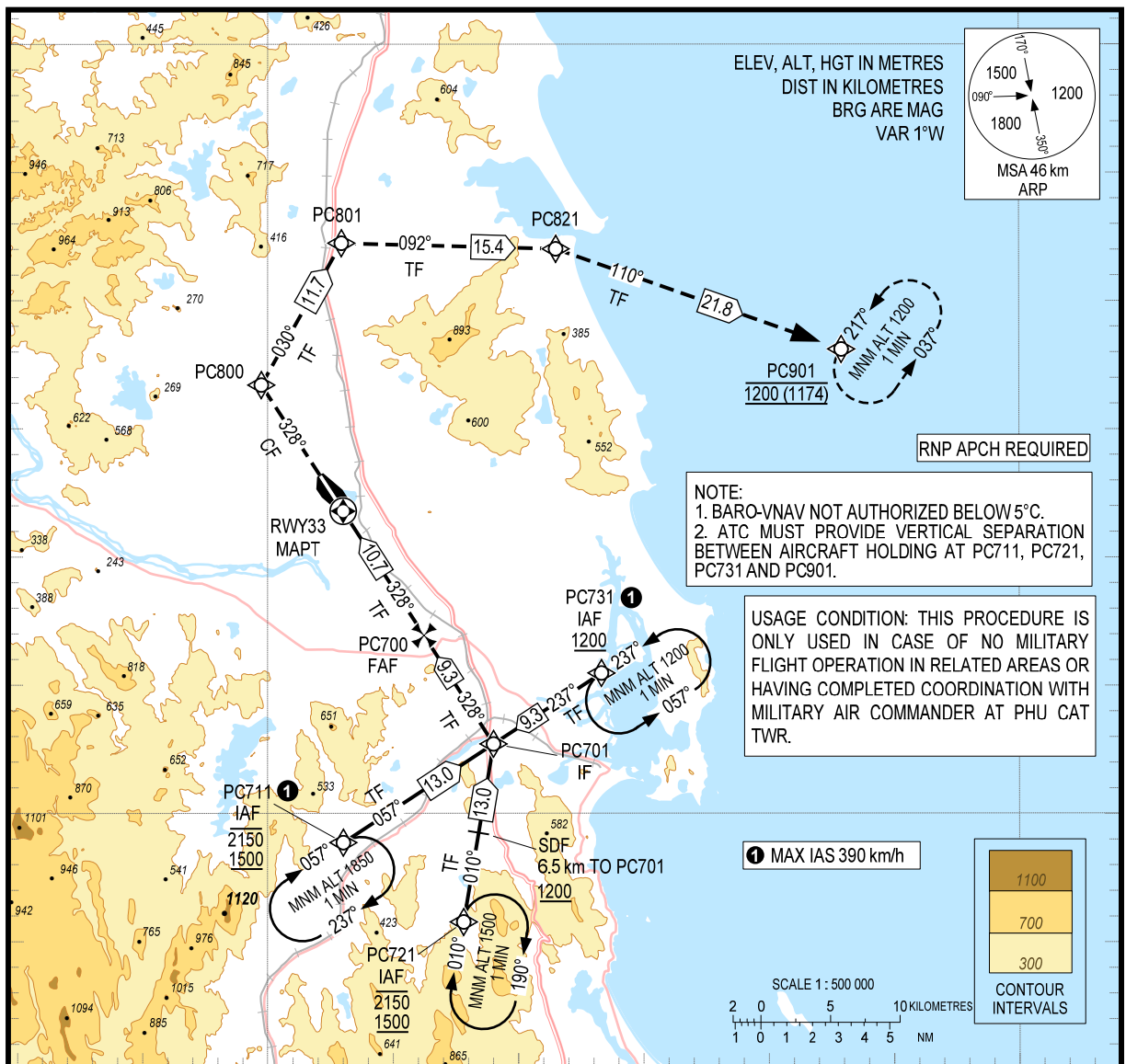


109°00'E

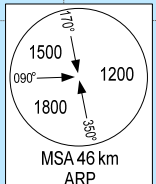
109°30'E

14° 15' N

14° 15' N



ELEV, ALT, HGT IN METRES
 DIST IN KILOMETRES
 BRG ARE MAG
 VAR 1°W

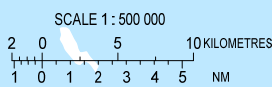
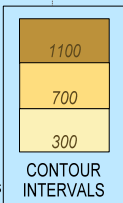


RNP APCH REQUIRED

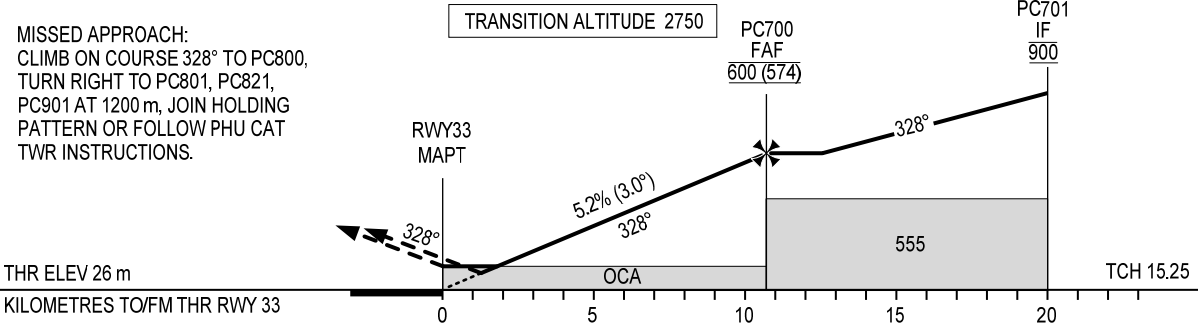
NOTE:
 1. BARO-VNAV NOT AUTHORIZED BELOW 5°C.
 2. ATC MUST PROVIDE VERTICAL SEPARATION BETWEEN AIRCRAFT HOLDING AT PC711, PC721, PC731 AND PC901.

USAGE CONDITION: THIS PROCEDURE IS ONLY USED IN CASE OF NO MILITARY FLIGHT OPERATION IN RELATED AREAS OR HAVING COMPLETED COORDINATION WITH MILITARY AIR COMMANDER AT PHU CAT TWR.

1 MAX IAS 390 km/h



KILOMETRES TO NEXT WPT	RWY33	2	4	6	8	10	10.7
ALT		145	250	360	460	565	600



OCA (H)	A	B	C	D
LNAV/VNAV		140 (114)		
LNAV		160 (134)		
CIRCLING	NOT APPLICABLE			

GS	km/h	150	200	250	300
RATE OF DESCENT	m/s	2.2	2.9	3.6	4.4
FAF - MAPT 10.7 km	min:s	4:17	3:13	2:34	2:08