

109°00'E

109°30'E

14° 30' N

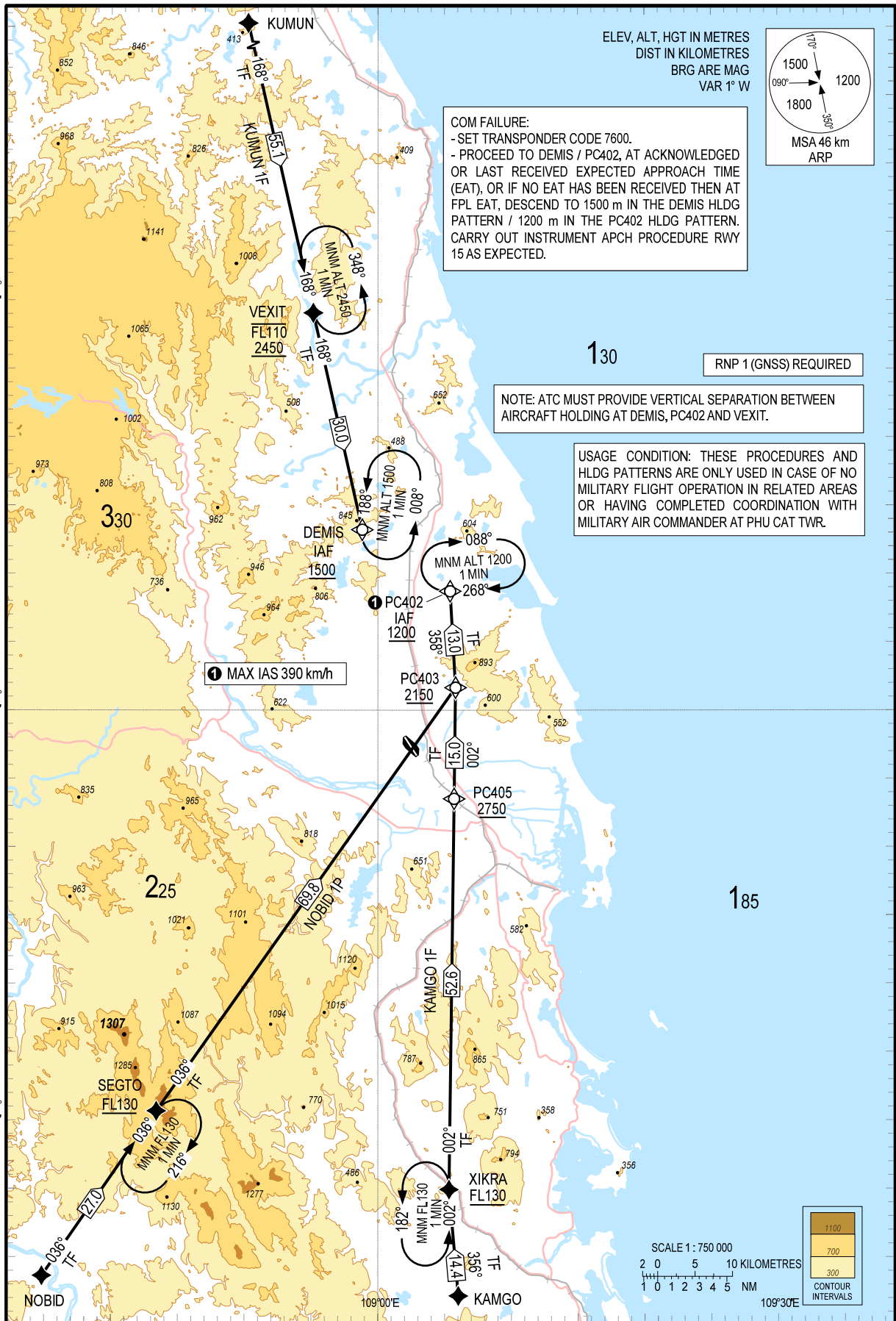
14° 30' N

14° 00' N

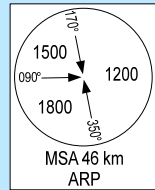
14° 00' N

13° 30' N

13° 30' N



ELEV, ALT, HGT IN METRES
DIST IN KILOMETRES
BRG ARE MAG
VAR 1° W



COM FAILURE:
- SET TRANSPONDER CODE 7600.
- PROCEED TO DEMIS / PC402, AT ACKNOWLEDGED OR LAST RECEIVED EXPECTED APPROACH TIME (EAT), OR IF NO EAT HAS BEEN RECEIVED THEN AT FPL EAT, DESCEND TO 1500 m IN THE DEMIS HLDG PATTERN / 1200 m IN THE PC402 HLDG PATTERN. CARRY OUT INSTRUMENT APCH PROCEDURE RWY 15 AS EXPECTED.

RNP 1 (GNSS) REQUIRED

NOTE: ATC MUST PROVIDE VERTICAL SEPARATION BETWEEN AIRCRAFT HOLDING AT DEMIS, PC402 AND VEXIT.

USAGE CONDITION: THESE PROCEDURES AND HLDG PATTERNS ARE ONLY USED IN CASE OF NO MILITARY FLIGHT OPERATION IN RELATED AREAS OR HAVING COMPLETED COORDINATION WITH MILITARY AIR COMMANDER AT PHU CAT TWR.

MAX IAS 390 km/h

