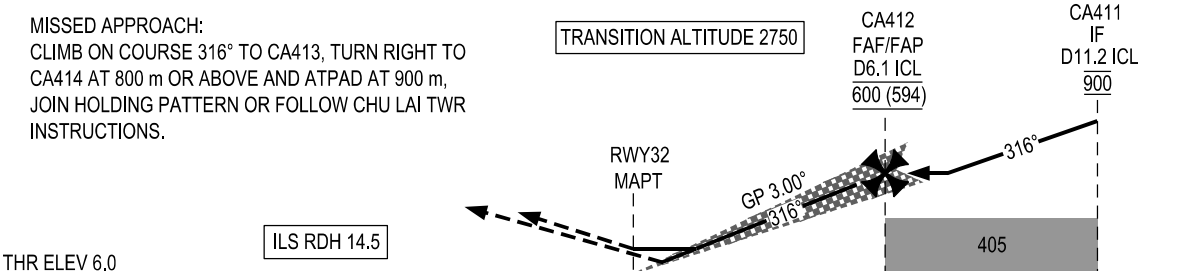


**REQUIRED:**  
1. DME.  
2. RNP 1 (GNSS) FOR INITIAL APPROACH AND MISSED APPROACH SEGMENTS.

**USAGE CONDITION:** THIS PROCEDURE IS ONLY USED IN CASE OF NO MILITARY FLIGHT OPERATION IN RELATED AREAS OR HAVING COMPLETED COORDINATION BETWEEN CIVIL AVIATION AND MILITARY.

DME DIST	ICL	1.7	2.0	3.0	4.0	5.0	6.1
ALTITUDE (3.00°)		165	200	295	395	490	600



KILOMETRES TO/ FM THR RWY 32

		12	6	0	6	12	18
--	--	----	---	---	---	----	----

OCA (H)		A	B	C	D	GS	km/h	150	200	250	300	350
STRAIGHT-IN APPROACH	CAT I	84 (78)	87 (81)	90 (84)	93 (87)	FAF - MAPT 11.1 km	min:s	4:25	3:19	2:39	2:13	1:54
	GP INOP	245 (237)				RATE OF DESCENT (3.00°)	m/s	2.2	2.9	3.6	4.4	5.1
CIRCLING		325 (317)		420 (412)								

CIRCLING IS ONLY IN THE NORTH EAST OF RWY

SEE THE NEXT PAGES FOR CODING DATA