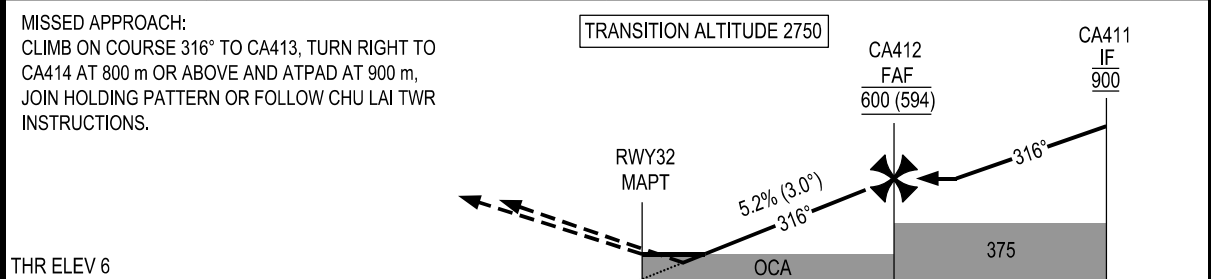


KILOMETRES TO NEXT WPT	RWY32	1.9	4.0	6.0	8.0	10.0	11.0
ALTITUDE		120	230	335	440	545	600



THR ELEV 6

KILOMETRES TO/FM THR RWY 32	12	6	TCH 15.25	0	6	12	18
-----------------------------	----	---	-----------	---	---	----	----

OCA (H)	A	B	C	D
LNAV/VNAV	120 (114)			
LNAV	165 (157)			
CIRCLING	325 (317)		420 (412)	

GS	km/h	150	200	250	300	350
RATE OF DESCENT 5.2% (3.0°)	m/s	2.2	2.9	3.6	4.4	5.1

CIRCLING IS ONLY IN THE NORTH EAST OF RWY

SEE THE NEXT PAGES FOR CODING DATA