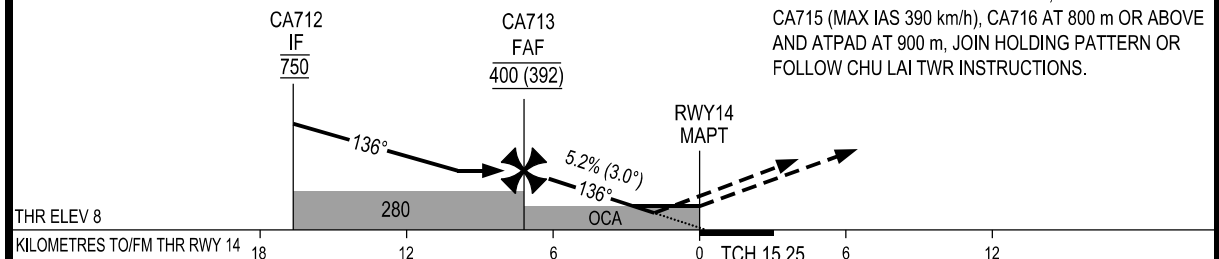


KILOMETRES TO NEXT WPT	RWY14	1.6	2.0	4.0	6.0	7.2
ALTITUDE		105	130	235	335	400

TRANSITION ALTITUDE 2750

MISSED APPROACH:  
CLIMB ON COURSE 136° TO CA714, TURN LEFT TO CA715 (MAX IAS 390 km/h), CA716 AT 800 m OR ABOVE AND ATPAD AT 900 m, JOIN HOLDING PATTERN OR FOLLOW CHU LAI TWR INSTRUCTIONS.



OCA (H)	A	B	C	D
LNAV/VNAV	105 (97)			
LNAV	165 (157)			
CIRCLING	325 (317)		420 (412)	

GS	km/h	150	200	250	300	350
RATE OF DESCENT 5.2% (3.0°)	m/s	2.2	2.9	3.6	4.4	5.1

CIRCLING IS ONLY IN THE NORTH EAST OF RWY

SEE THE NEXT PAGES FOR CODING DATA