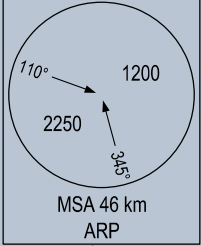
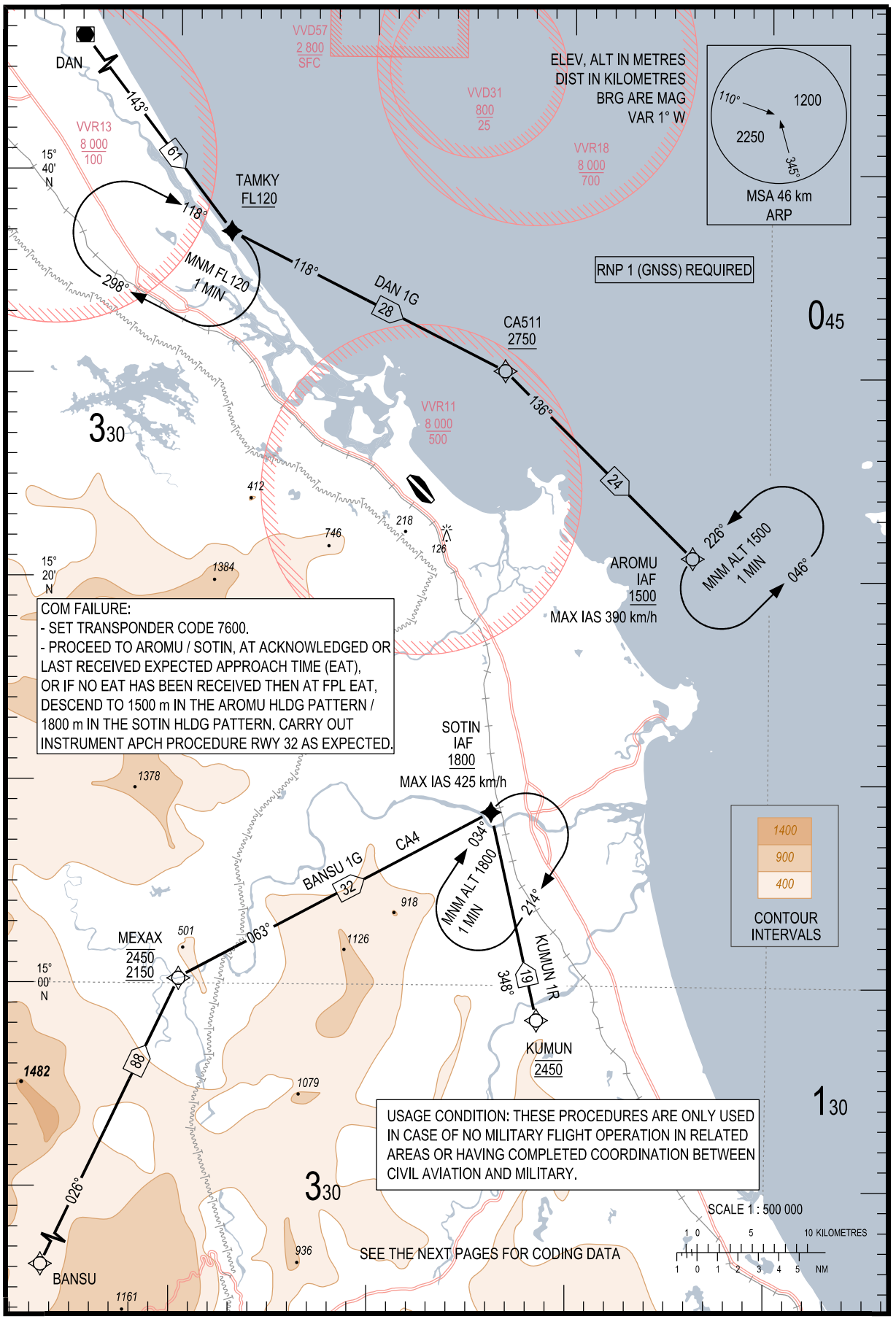


108°40'E

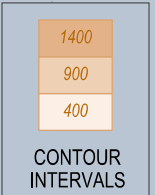
109°00'E



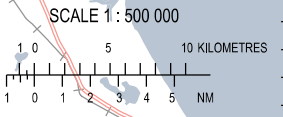
RNP 1 (GNSS) REQUIRED

045

COM FAILURE:
 - SET TRANSPONDER CODE 7600.
 - PROCEED TO AROMU / SOTIN, AT ACKNOWLEDGED OR LAST RECEIVED EXPECTED APPROACH TIME (EAT), OR IF NO EAT HAS BEEN RECEIVED THEN AT FPL EAT, DESCEND TO 1500 m IN THE AROMU HLDG PATTERN / 1800 m IN THE SOTIN HLDG PATTERN. CARRY OUT INSTRUMENT APCH PROCEDURE RWY 32 AS EXPECTED.



USAGE CONDITION: THESE PROCEDURES ARE ONLY USED IN CASE OF NO MILITARY FLIGHT OPERATION IN RELATED AREAS OR HAVING COMPLETED COORDINATION BETWEEN CIVIL AVIATION AND MILITARY.



SEE THE NEXT PAGES FOR CODING DATA