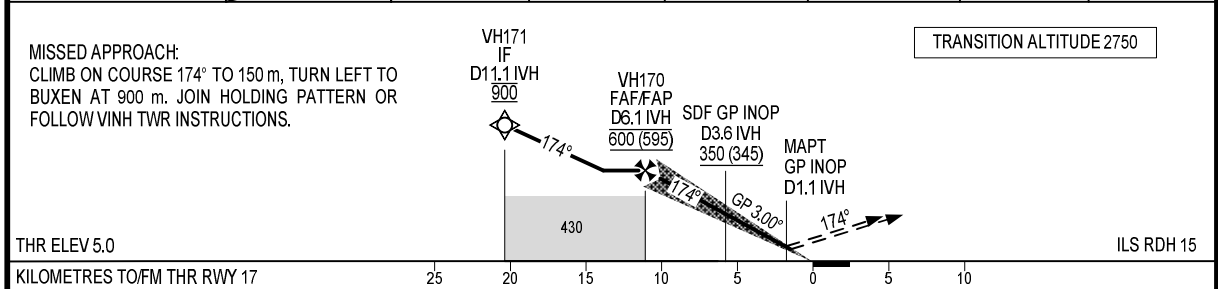


RNP 1 (GNSS) REQUIRED FOR INITIAL APPROACH AND MISSED APPROACH SEGMENTS.

USAGE CONDITION: THIS PROCEDURE IS ONLY USED IN CASE OF NO MILITARY FLIGHT OPERATION IN RELATED AREAS OR HAVING COMPLETED COORDINATION BETWEEN CIVIL AVIATION AND MILITARY.

KILOMETRES TO NEXT WPT	RWY17	1.2	3	5	7	9	11.1
ALT		85	175	280	385	490	600



KILOMETRES TO/FM THR RWY 17

OCA(H)		A	B	C	D	FAF - MAPT: 9.26 km						
STRAIGHT-IN APPROACH	CAT I	83 (78)				GS	km/h	130	170	210	250	290
	GP INOP	135 (130)				RATE OF DESCENT	m/s	1.9	2.5	3.0	3.6	4.2
CIRCLING		210 (204)	390 (384)	430 (424)								